

INSTRUCTIONS FOR INSTALLING HTP PROGRAMMER SOFTWARE

SYSTEM REQUIREMENTS

- HTP Programmer software is designed for and tested on Windows XP (SP3), Windows 7
- HTP Programmer software has been run on Windows 8 and 10.
- Connection to the Internet only at the time of installation.

FIELD REQUIREMENTS

A PC Connection Cable is needed to be able to connect to a control board. The cable that you use will limit the boards that you can program. HTP Part Number# 7250P-738 (cable most commonly used with 925 and 926 boards) can only be used with those two boards and will NOT work with a 928 control board.

To program a 928 board you must use a new programming cable. This cable can be ordered as part number 7450P-330. This cable is backwards compatible and will work with older 925 and 926 control boards.

PRELIMINARY INSTALLATION STEPS

1. Launch **setup.exe** by double-clicking on the file name.

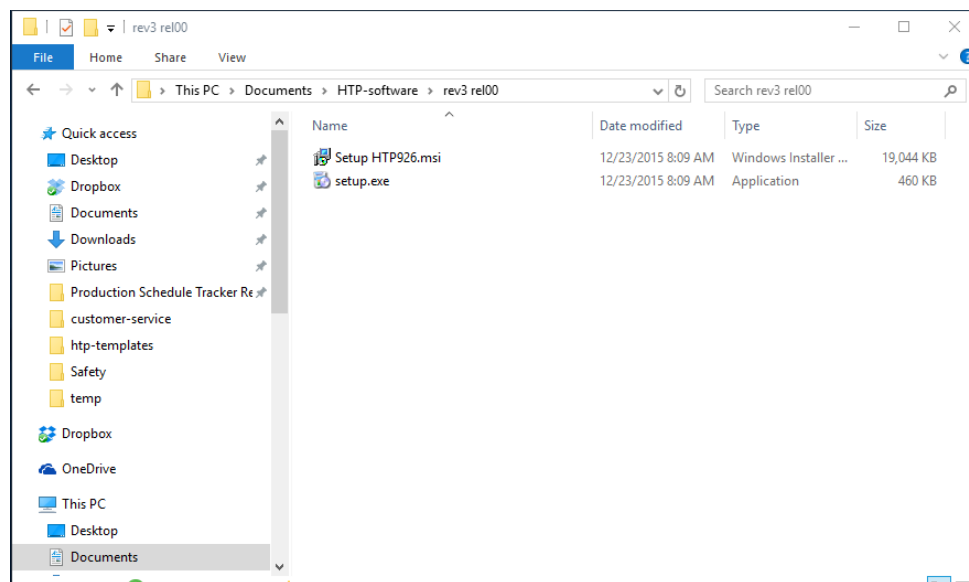


Figure 1 – Windows Explorer showing the files

2. Setup will first check to see if you have the Microsoft .NET Framework 4.0 installed.

- a. If Microsoft .NET Framework 4.0 is installed, please continue to the HTP Programmer Installation section on page 5.
- b. If Microsoft .NET Framework 4.0 is not installed, a window will appear and ask if you would like to install the .NET Framework 4.0 now (Figure 2). To continue installing HTP Programmer you must select **Yes**. HTP Programmer will not function without .NET Framework 4.0. Continue to .NET Framework 4.0 Installation section.

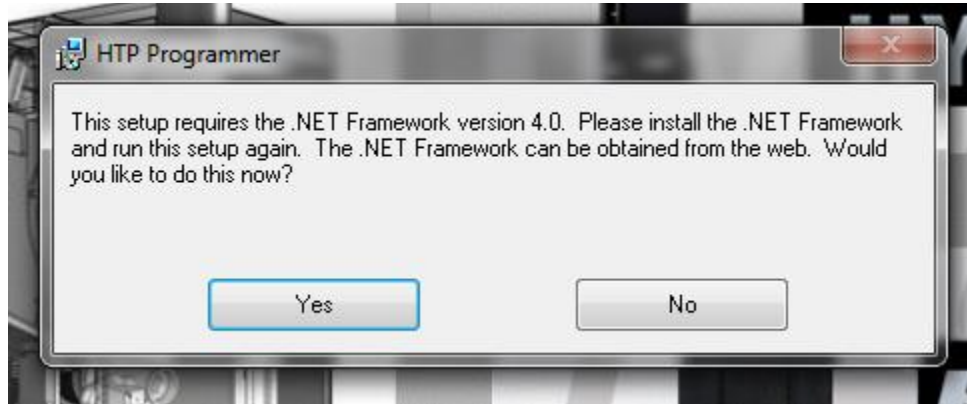


Figure 2 – Installer directing installation of .NET Framework

.NET FRAMEWORK 4.0 INSTALLATION

1. When you select **Yes**, the installer will open the Microsoft website where you can download .NET Framework 4.0. You will see the page pictured in Figure 3. Select the 3rd link in .NET Framework Highlights column labeled **Download .NET 4**.

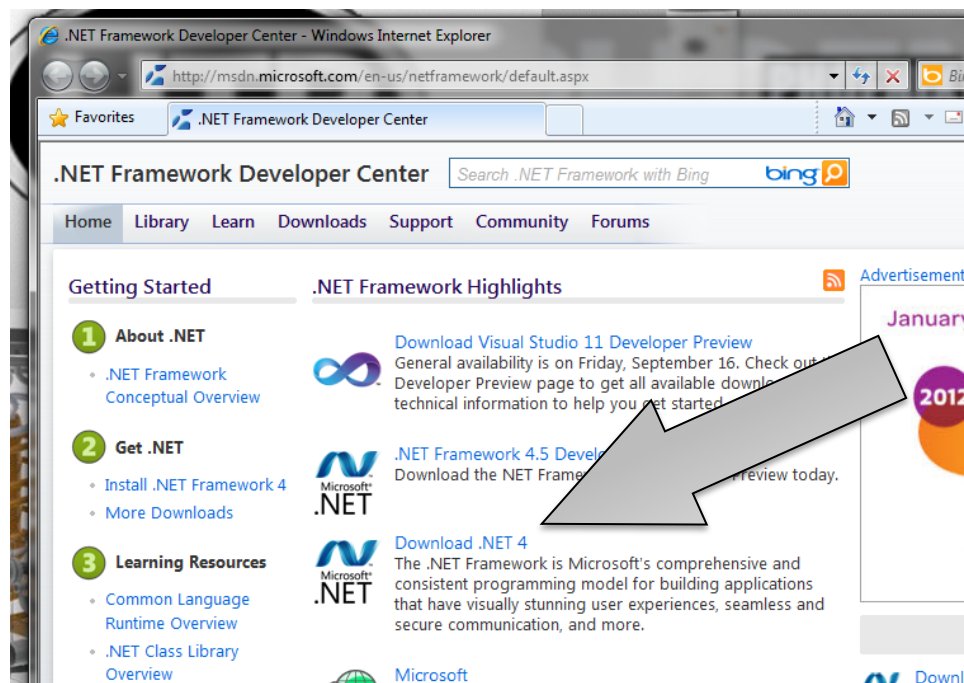


Figure 3 – Microsoft .NET Framework Developer Center

2. Once you select the Download .NET 4 link, you will be taken to the Microsoft .NET Framework 4 (Web Installer) page on the Microsoft Download Center. On this page, select the orange **Download** button to begin downloading Microsoft .NET Framework 4. (Figure 4)

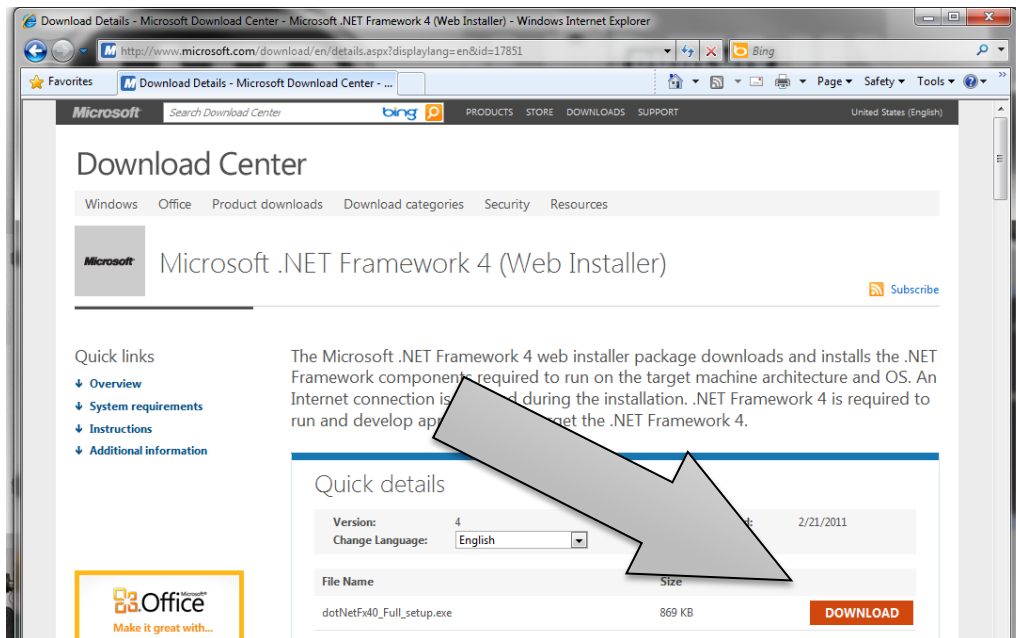


Figure 4 – Microsoft .NET Framework

- After selecting the orange download button your web browser will prompt you to **Run** or **Save** the .NET Framework 4.0 setup file. (Figure 5).

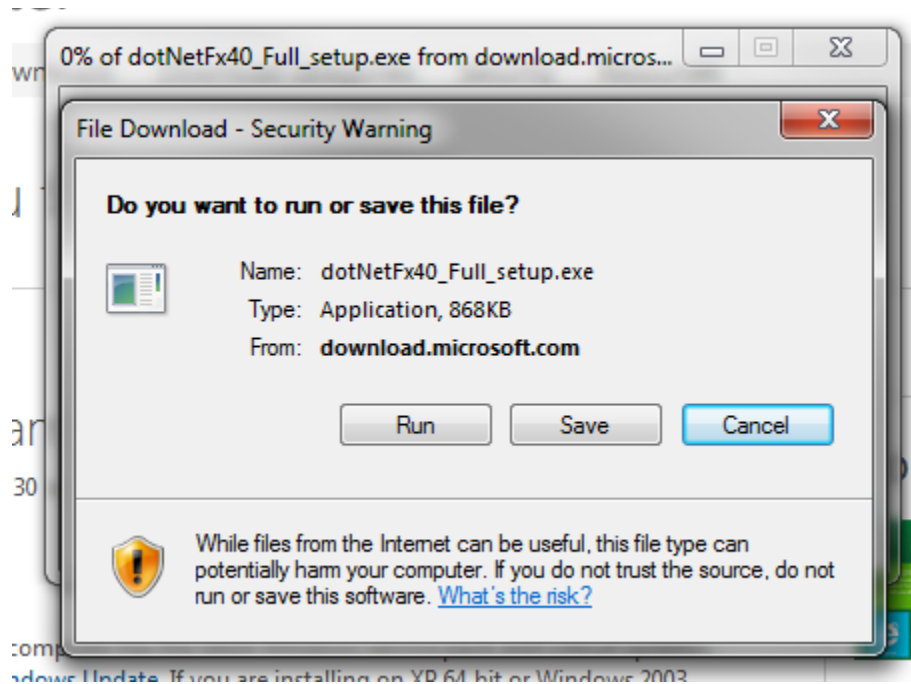


Figure 5 – Browser Run / Save Prompt

- When running Microsoft .NET Framework setup, you will need to be connected to the Internet. **Check the box** next to, "I have read and accept the license terms." Then pick the **Install** button. (Figure 6)

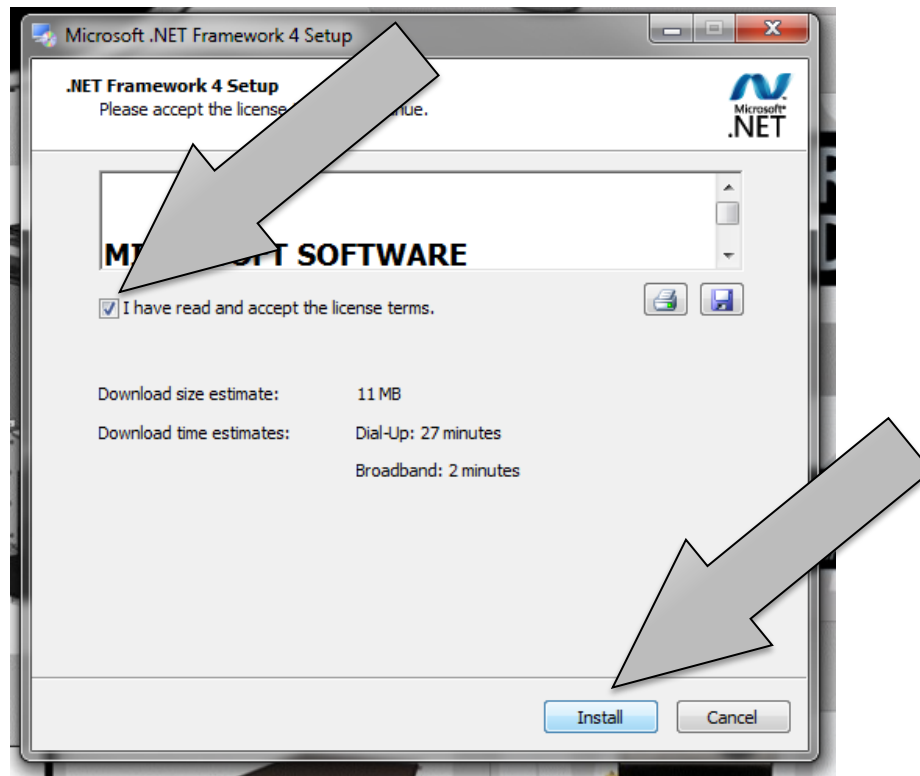


Figure 6 – Microsoft .NET Framework Setup

5. Let the installation of the Microsoft .NET Framework 4.0 run until it is complete as pictured in Figure 7.

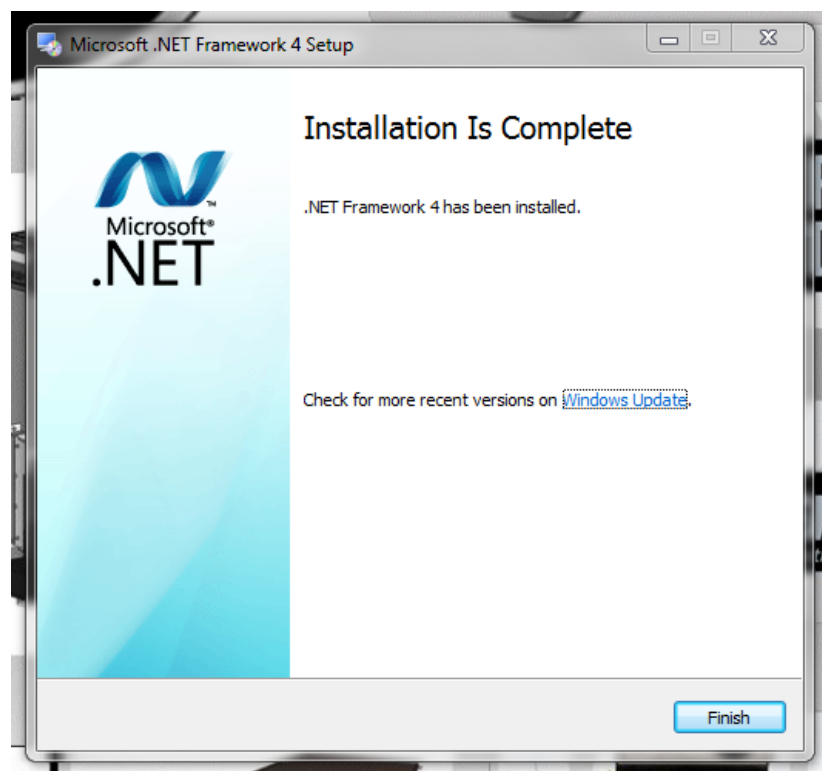


Figure 7 – Microsoft .NET Framework 4.0 Setup Complete

6. Once the Microsoft .NET Framework 4.0 setup is complete, select **Finish** to exit. To continue HTP Programmer Installation the **setup.exe** needs to be started again. See step 1 of the Preliminary Installation Steps section on page 1.

HTP PROGRAMMER INSTALLATION

1. With Microsoft .NET Framework 4.0 installed HTP Programmer setup will advance to the initial installation screen. Select **Next** to advance the installation. (Figure 8)

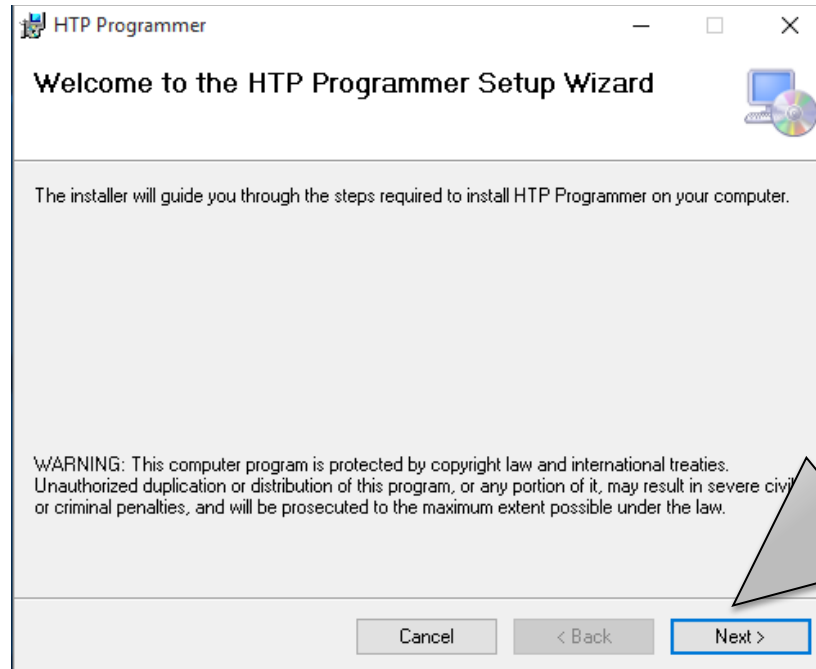


Figure 8 –HTP Programmer Setup - Welcome Screen

2. On the next screen (Figure 9) choose the folder where you want to install the software. Optionally, you can choose if the software is available to all users or just the installer. Select **Next** to continue.

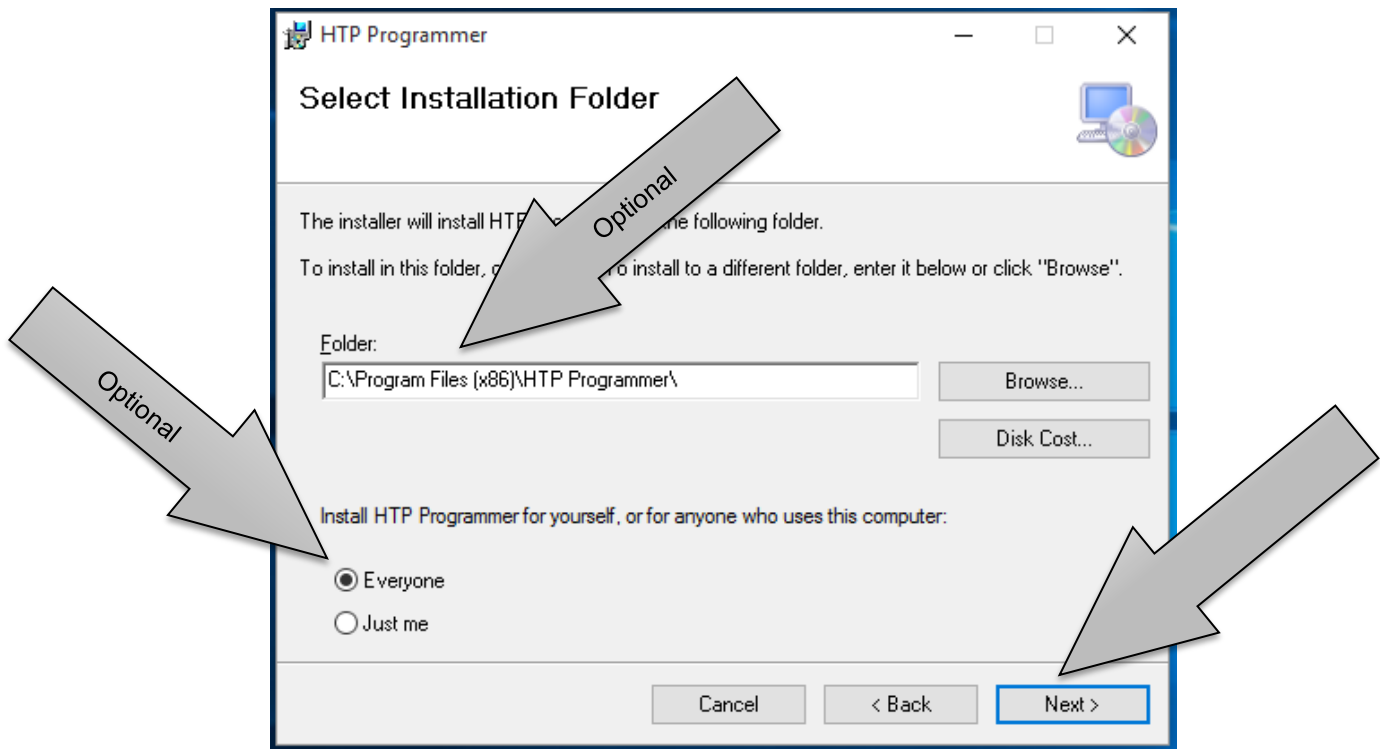


Figure 9 – HTP Programmer Setup - Select Installation Folder Screen

3. The Confirm Installation screen will be next. (Figure 10) This screen provides the option to cancel, back up to make a change, or select **Next** to start the installation.

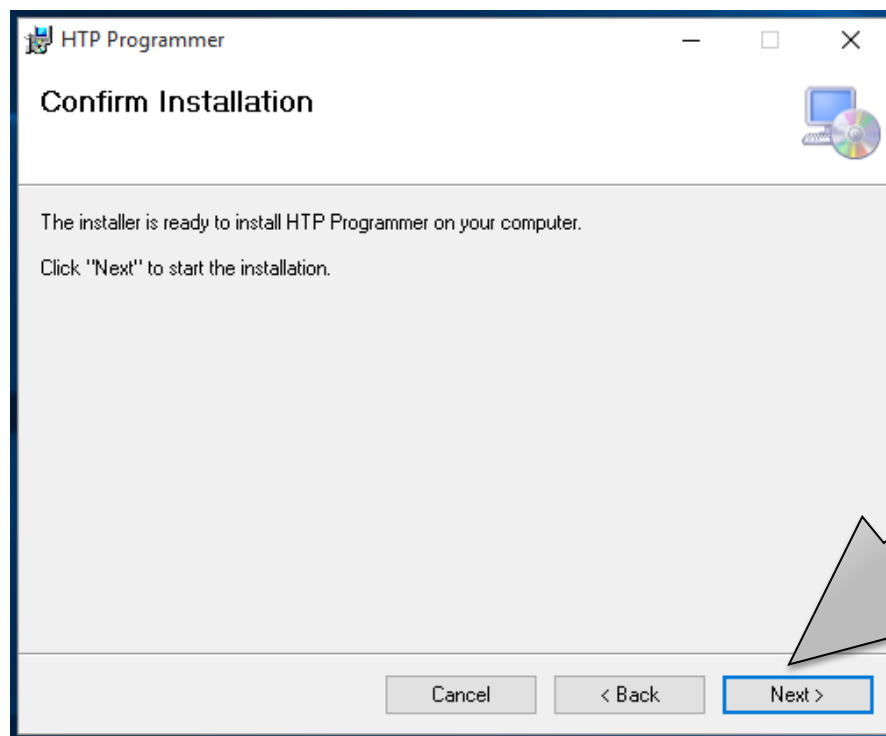


Figure 10 – HTP Programmer Setup - Confirm Installation Screen

4. Once installation is complete, select **Close** to exit setup.

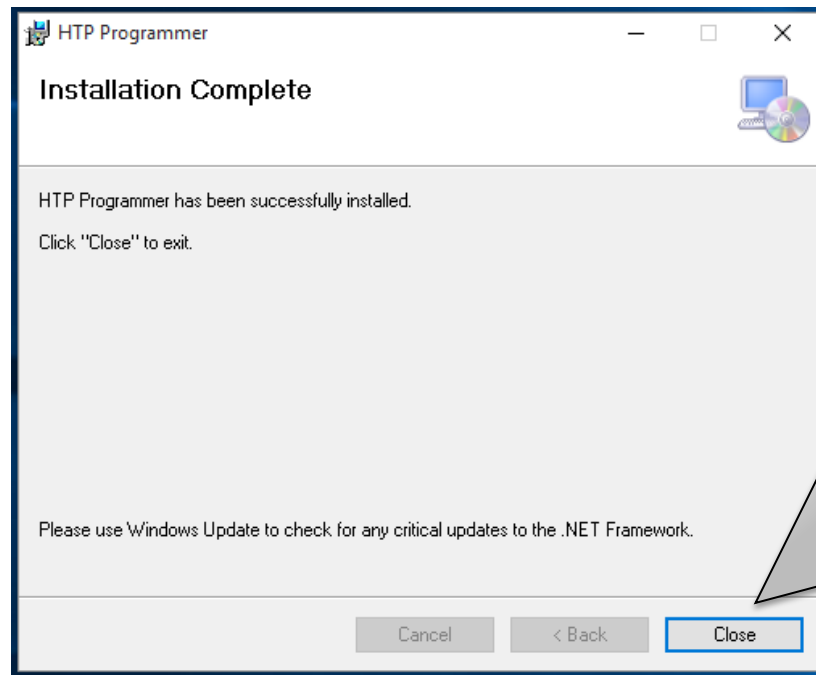


Figure 11 – HTP Programmer Setup – Installation Complete Screen

STARTING HTP PROGRAMMER

1. To launch HTP Programmer, select it from the Windows start menu. (Figure 12)

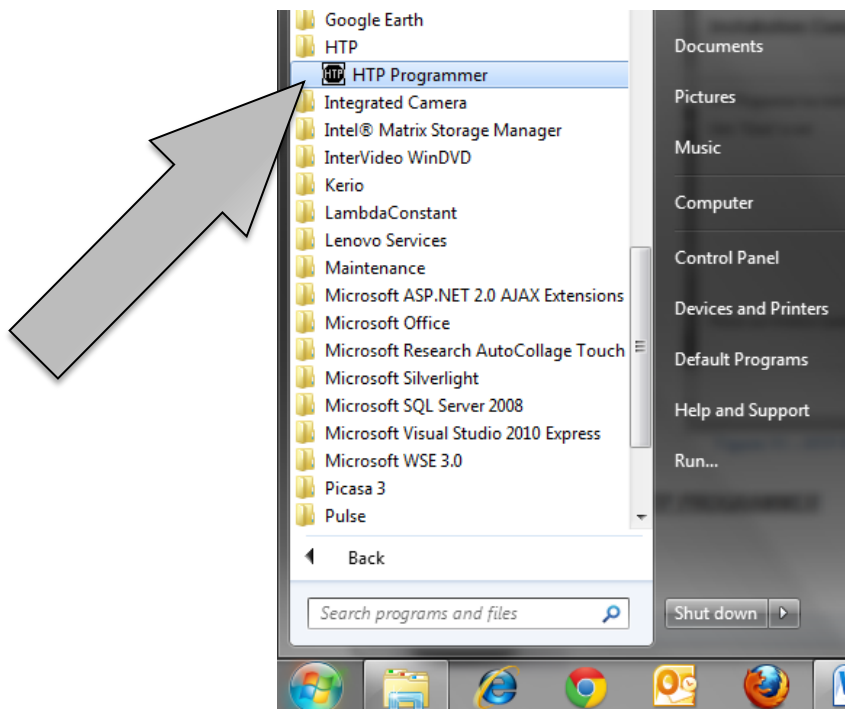


Figure 12 – Selecting HTP Programmer from Windows Start

- Once the software starts, verify that it shows as Rev 003 / Rel 001 (Figure 13), which is the most current version.

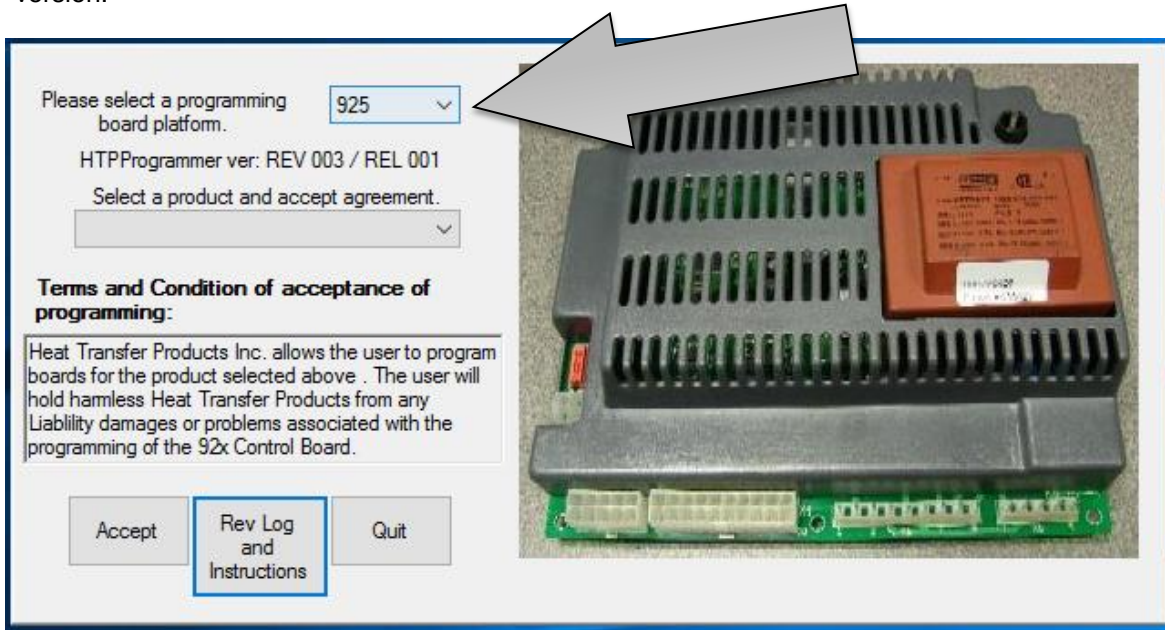


Figure 13 – HTP Programmer Initial Screen

- To start working with HTP Programmer, **choose the control board platform (925, 926, or 928).** Then **select a product** and select **Accept** to get started. (Figure 14)

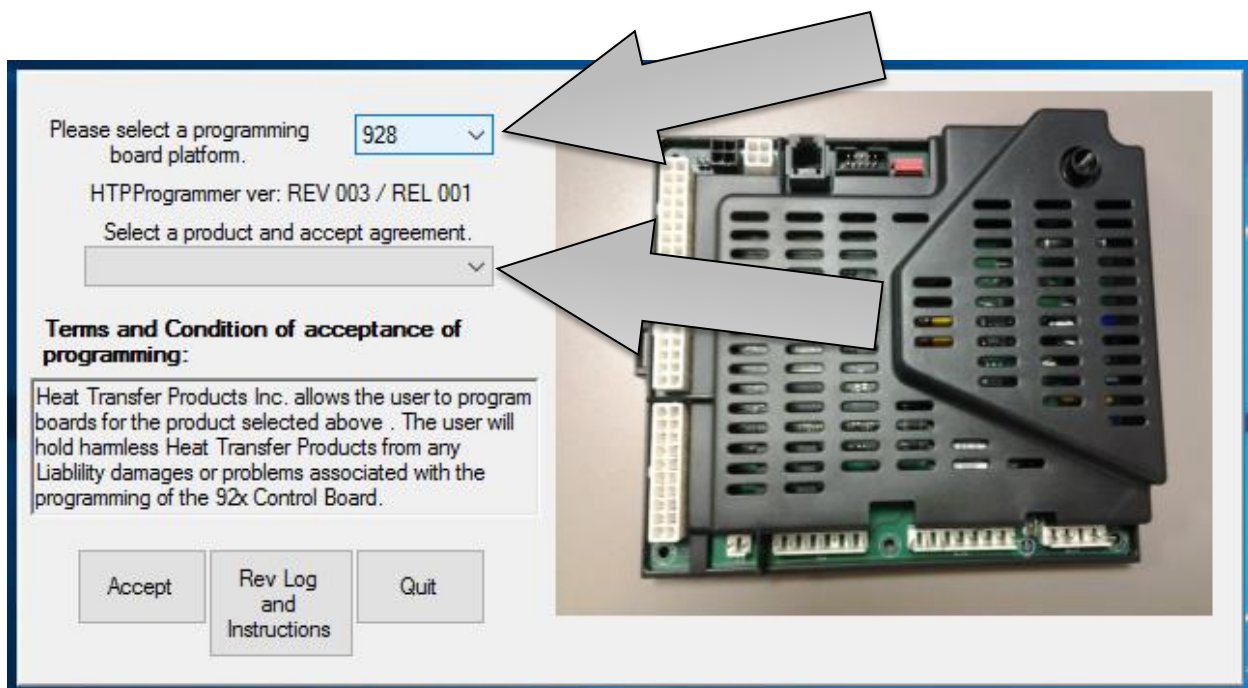


Figure 14 – 928 Board Platform Product Selection