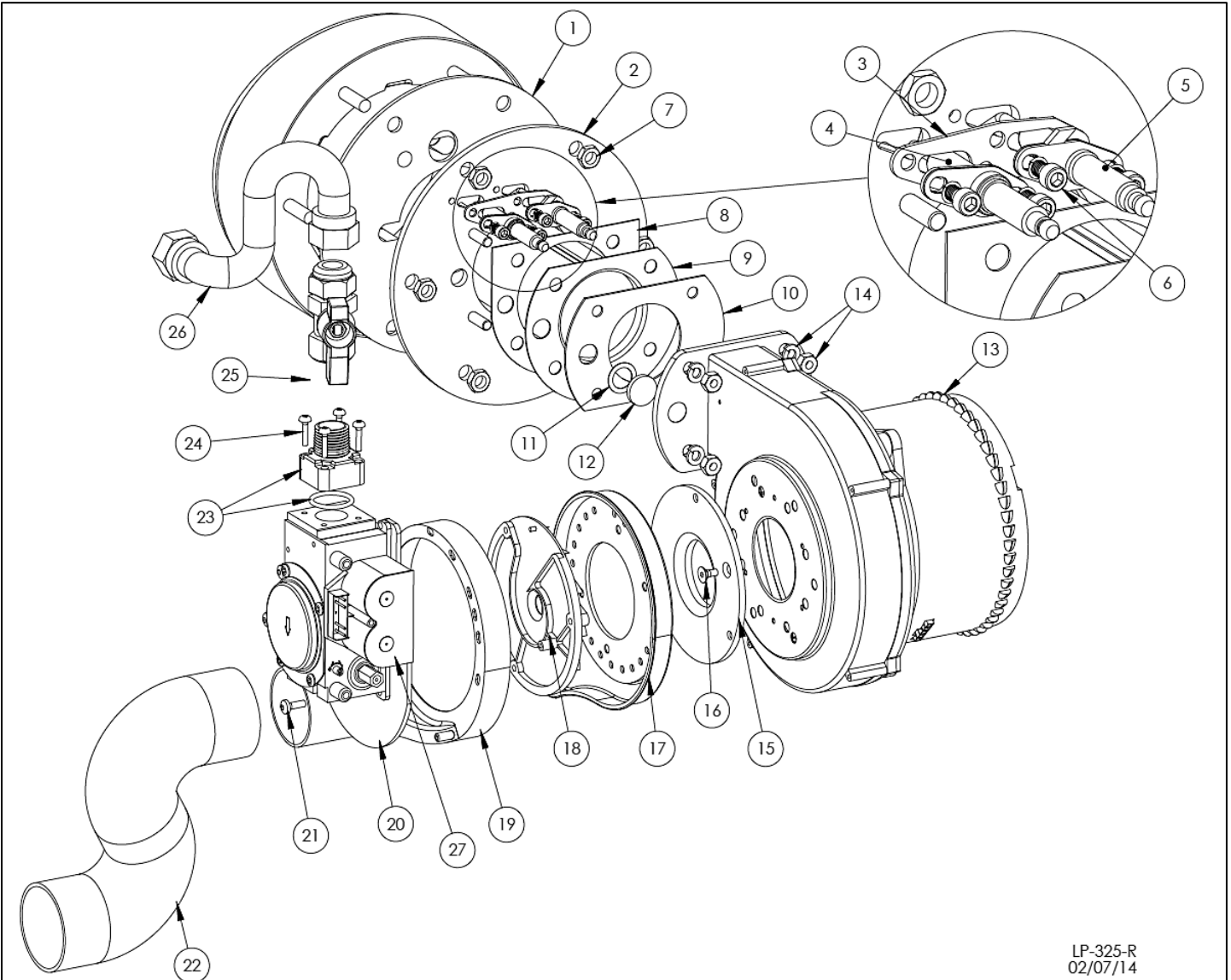


| Item # | Description                                    | Replacement Part # |
|--------|--|--------------------|
| 1      | LOW WATER CUT-OFF SENSOR                       | 7000P-852-1        |
| 2      | COMBINATION SUPPLY/HIGH TEMP SENSOR            | 7450P-192          |
| 3      | CUSTOMER CONNECTION BOARD                      | 7350P-070          |
| 4      | THERMISTOR                                     | 7100P-005          |
| 5      | 3/4" NPT DRAIN VALVE                           | 7100P-278          |
| 6      | 3/4" NPT - 30 PSI RELIEF VALVE                 | 7100P-279          |
| 7      | CONTROL DISPLAY                                | 7350P-009          |
| 8      | CONTROL BOARD                                  | 7450P-122          |
| 9      | 120 VOLT WIRE HARNESS (LOCATION SHOWN)         | 7100P-343          |
| 10     | BLOCKED VENT PRESSURE SWITCH                   | 7250P-150          |
| 11     | LOW VOLTAGE WIRING HARNESS (LOCATION SHOWN)    | 7100P-280          |
| 12     | S.S. HOSE BARB                                 | 7250P-154          |
| 13     | CONDENSATE HOSE                                | 7100P-043          |
| 14     | HOSE CLAMP - CONDENSATE HOSE                   | 7250P-215          |
| 15     | HIGH FLUE TEMP SWITCH                          | VS210              |
| 16     | 2" COUPLING (w/NUT) - AIR LINET (100/130K BTU) | 7100P-114          |
| 17     | 3" COUPLING (w/NUT) AIR INLET (160/199K BTU)   | 7100P-103          |
| 17     | SENSOR WIRE HARNESS KIT (NOT SHOWN)            | 7100P-282          |
| 18     | AIR VENT                                       | 7450P-197          |

Figure 31 – Pioneer and Versa-Flame



LP-325-R  
02/07/14

| Item # | Description  | Replacement Part # |
|--------|--|--------------------|
| 1      | GASKET - MOUNTING PLATE                                    | 7100P-139          |
| 2      | MOUNTING PLATE   | 7100P-007          |
| 3      | GASKET - PROBES  | 7100P-155          |
| 4      | FLAME RECTIFICATION PROBE                                  | 7100P-082          |
| 5      | IGNITOR ELECTRODE  | 7100P-124          |
| 6      | 10-32 X 3/8 SCREWS/#10 LOCK WASHERS                        | N/A                |
| 7      | NUTS - 5/16-18   | N/A                |
| 8      | GASKET - BURNER MOUNTING FLANGE                            | 7100P-152          |
| 9      | BURNER - 100-130K BTU                                      | 7100P-316          |
|        | BURNER - 160-199K BTU                                      | 7100P-317          |
| 10     | GASKET - BURNER OUTLET                                     | 7000P-361          |
| 11     | GASKET - SIGHT GLASS                                       | 7100P-105          |
| 12     | SIGHT GLASS  | G2000              |
| 13     | COMBUSTION BLOWER (w/GASKET, SIGHT GLASS)                  | 7100P-015          |
|        | COMBUSTION BLOWER (w/GASKET, SIGHT GLASS)<br>199K BTU ONLY | 7100P-350          |

| Item # | Description                            | Replacement Part # |
|--------|--|--------------------|
| 14     | 1/4-20 BRASS NUTS/1/4 LOCK WASHERS     | 7100P-268          |
| 15     | ADAPTER PLATE                          | 7250P-644          |
| 16     | FLAT HEAD SCREW - ADAPTER PLATE        | 7100P-045          |
| 17     | AIR INTAKE ADAPTER - BLOWER SIDE       | 7500P-185          |
| 18     | SWIRL PLATE - BLACK (100/130K BTU)     | 7100P-042          |
|        | SWIRL PLATE - WHITE (160/199K BTU)     | 7500P-092          |
| 19     | AIR INTAKE ADAPTER - VALVE SIDE        | 7500P-184          |
| 20     | GAS VALVE (100/130K BTU)               | 7000P-862          |
|        | GAS VALVE (160/199K BTU)               | 7000P-863          |
| 21     | SCREWS - GAS VALVE                     | 7100P-046          |
| 22     | TUBE - AIR INLET                       | 7500P-189          |
| 23     | GAS VALVE ADAPTER (w/O-RING)           | 7250P-454          |
| 24     | SCREWS - M4 X 20MM - GAS VALVE ADAPTER | 7250P-717          |
| 25     | GAS SHUT-OFF VALVE                     | 7250P-140          |
| 26     | 1/2" FLARE X 1/2" NPT FLEX HOSE        | 7100P-140          |
| 27     | 24VAC GAS VALVE COIL ONLY - GREY       | 7350P-624          |

Figure 32 – Pioneer and Versa-Flame

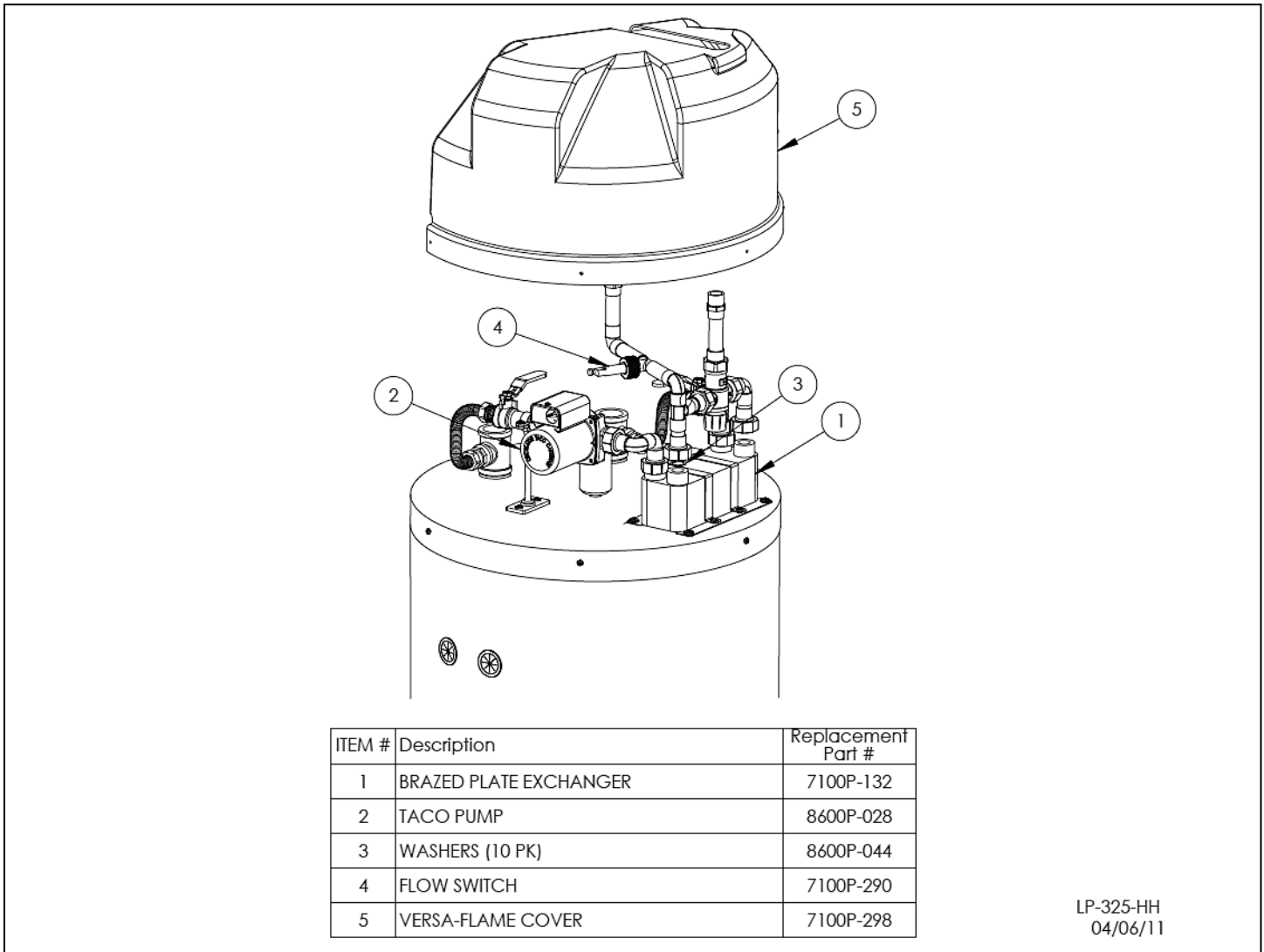


Figure 33 – DHW Module - \*Versa-Flame ONLY

## PART 13 – MAINTENANCE

### CAUTION

In unusually dirty or dusty conditions, care must be taken to keep appliance cabinet door in place at all times. Failure to do so VOIDS WARRANTY!

### WARNING

Allowing the appliance to operate with a dirty combustion chamber will hurt operation. Failure to clean the heat exchanger as needed by the installation location could result in appliance failure, property damage, personal injury, or death. Such product failures ARE NOT covered under warranty.

The appliance requires minimal periodic maintenance under normal conditions. However, in unusually dirty or dusty conditions, periodic vacuuming of the cover to maintain visibility of the display and indicators is recommended.

Periodic maintenance should be performed once a year by a qualified service technician to assure that all the equipment is operating safely and efficiently. The owner should make necessary arrangements with a qualified heating contractor for periodic maintenance of the appliance. Installer must also inform the owner that the lack of proper care and maintenance of the appliance may result in a hazardous condition.