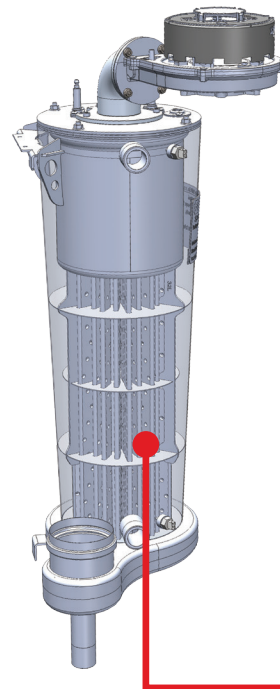




Advanced Heating
& Hot Water Systems

Elite FT[®]

High Efficiency Fire Tube Heating Boiler

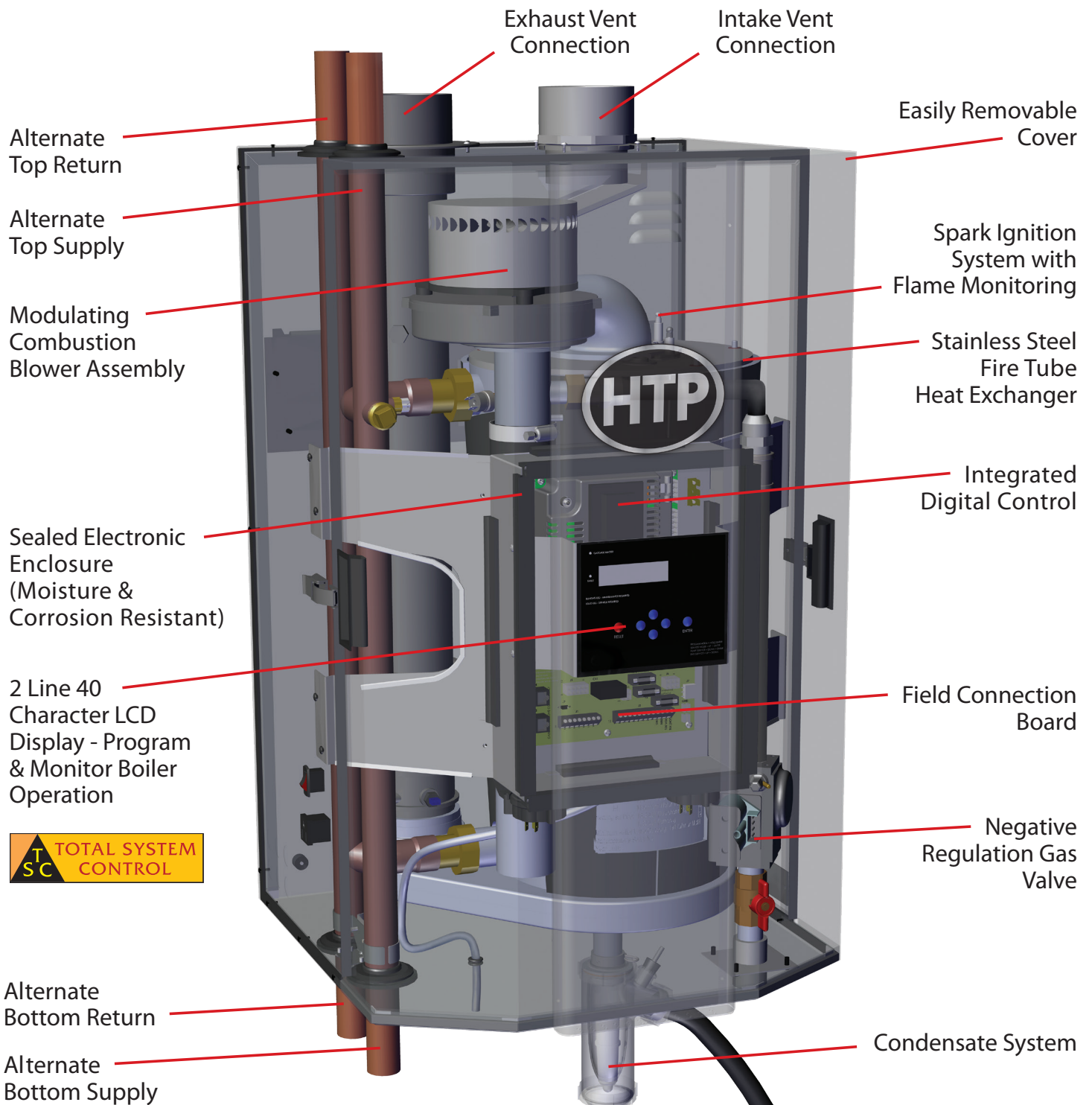


up to **97% Efficient**
10:1 Turndown Ratio



One of a kind design from the inside, out!

A Closer Look



Extremely Durable and Reliable – Minimal Maintenance Required

Energy Savings

Up to **95.1%** AFUE
operating efficiency

Outdoor reset lowers operating
set point automatically to
increase system efficiency

Modulating burner input matches
system load, conserving energy
and increasing system efficiency

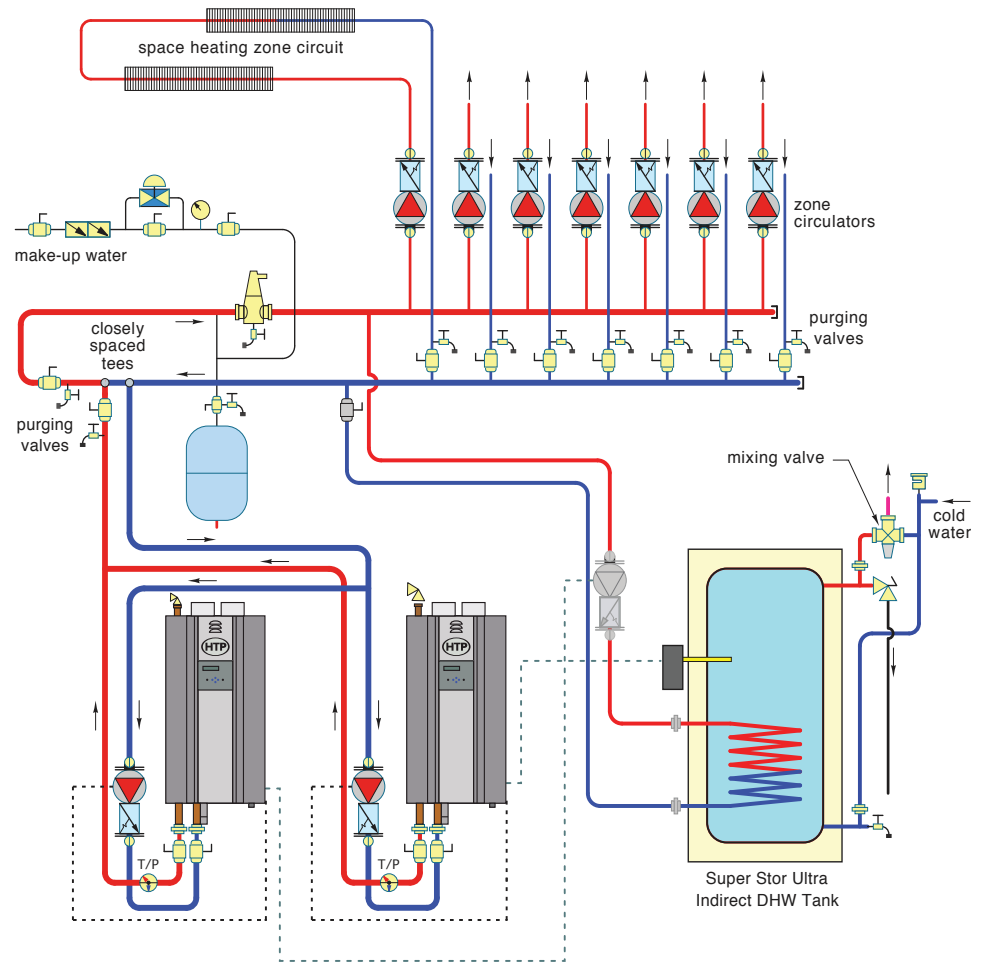
Low NOx emission - Reduces
environmental impact

Unbeatable combined vent length
of up to 150 ft 3" PVC pipe (EFT-285)
(4" PVC pipe for EFT-399)

Room air intake

Balanced or unbalanced
venting system

Commercial Installation



Stainless Steel Fire Tube Heat Exchanger

Down fire design, promotes self
cleaning of combustion system

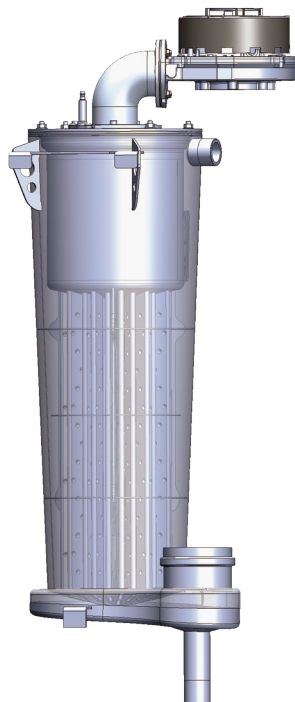
Durable high grade stainless steel
construction provides extended service life

Increased thermal mass provides low
pressure drop and eliminates short cycling

Compatible with glycol based systems

Built-in condensate collection system

10:1 turndown Ratio



Versatility

Top and Bottom piping connections

Field convertible from Natural to LP gas

Wall hung for space savings

Cascade up to 8 boilers - linked and
sequenced to function together for
commercial installations

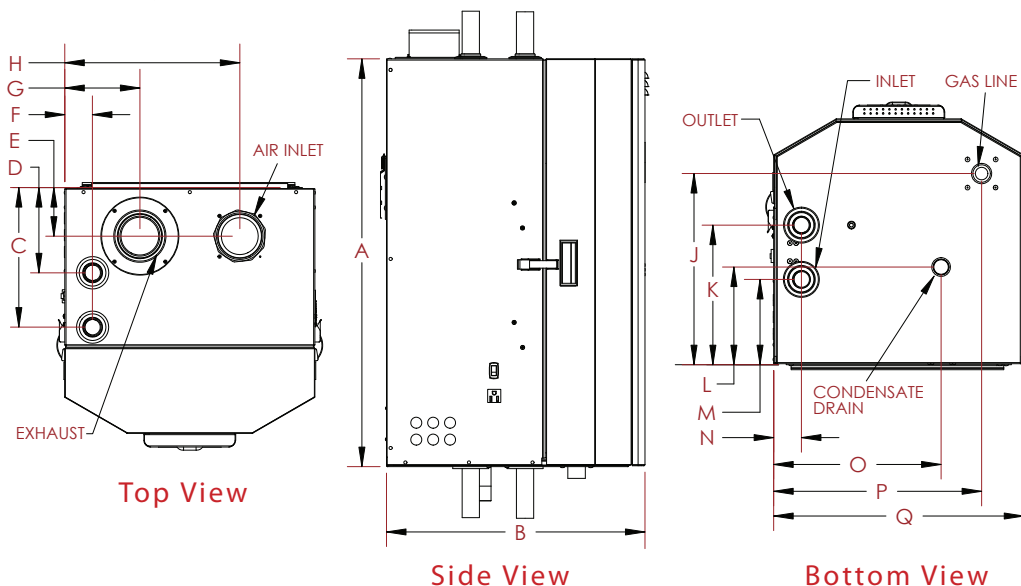
Model	AFUE /TE	Heating Capacity MBH	A	B	C	D	E	F	G	H	J	K	L	M	N	O	P	Q
EFT-285**	95.1	262	32 5/8"	20 5/8"	11 1/8"	6 7/8"	3 7/8"	2 1/4"	6"	14"	15 1/4"	11 1/8"	7 3/4"	6 7/8"	2 1/4"	13 3/8"	16 5/8"	20"
EFT-399**	97.1*	367	36 3/8"	23 5/8"	13 5/8"	8 1/2"	4 3/4"	2 3/4"	7 3/8"	18 1/8"	18 3/4"	13 5/8"	9 3/4"	8 1/2"	2 3/4"	16 1/2"	19 1/4"	25 1/2"

** add PU to end of stock code to include a pump

* Thermal Efficiency (Not AFUE)



ULTRA Low NOx Emissions



Model		285	399
Installation		Indoor, Wall Hung, Fully Condensing	
Minimum / Maximum Input (Btu/Hr)		28,500 / 285,000	39,900 / 399,000
Heating Capacity (MBH)		262	367*
Turndown Ratio		10:1	10:1
Flue System		Category IV, Sealed Combustion Direct Vent, Power Vent	
Minimum Combined Vent Run		16 feet	
Maximum Combined Vent Run		3" (150 feet)	4" (200 feet)
Approved Exhaust Vent Materials		PVC, CPVC, PP, Stainless Steel	
Shipping Weight (lbs)		203	298
Gas Supply Pressure	NG	3.5" to 14" WC	
	LP		
Manifold Pressure	Min / Max	NG/LP: -0.01" WC	
Power Supply		120V 60 Hz, 6.3A	
General Operating Conditions		Ambient Temperature Range: 33 – 104°F (0.6 – 40°C) Product Approvals and Requirements: ANSI Z21.13 / CSA 4.9	
Ignition System		Direct Electronic Spark Ignition / Flame Rectification	
Burner System		Premixed Fuel Modulation / Stainless Steel Metal Fiber Burner	
Gas Valve System		Air Ratio Valve	
Dimensions (in Inches)	W	20	25.5
	H	32.6	36.4
	D	20.6	23.6
Boiler Water Content (Gallons)		6.1	7.9
Minimum Flow Rate @ 30°F ΔT (GPM)		17.9	25.0
Boiler Setpoint Temperature Range		50 – 190°F / 32 – 190°F (with Outdoor Reset Curve)	
DHW Indirect Setpoint Temperature Range		70 – 180°F	
Water Pressure (PSI)	Heat Exchanger MAWP	80	
	Pressure Relief Valve	80	
Control Panel / Main Controller		LCD Display with LED Indicators / 926 SIT Control	
Connection Sizes	Supply / Return	1 1/2" Copper SWT	
	Gas Inlet	1" NPTF	
Materials	Cabinet	Powder Coated Galvalume Steel	
	Heat Exchanger	S43932 Stainless Steel Fire Tube	
Safety Devices		Flame Rectifier Probe, Dual Water Supply Temperature Sensor (199°F), Water Pressure Switch (Min. 10 PSI), Freeze Protection, Blocked Condensate Pressure Switch, Condensate Trap with Float, Flue Temperature High Limit Sensor (210°F), Blocked Vent Pressure Switch, Optional UL353 Low Water Cut-Off	

STANDARD FEATURES

- Up to 95.1% AFUE
- Modulating Burner
 - 10:1 Turndown ratio
- Venting Options
 - Concentric
 - 3" Pipe: Balanced or Unbalanced (EFT-285)
 - 4" Pipe (EFT-399)
- Limited 12 Year Warranty
- Wall Mounted
- Total System Control
- The Elite FT is ASME Certified

INCLUDED IN THE BOX

- Temperature and Pressure Gauge
- Pressure Relief Valve 80 PSI
- Indirect Sensor & Outdoor Sensor
- Intake PVC w/ Screens
- Exhaust PVC Coupling w/ Screens
- Installation Manual
- Warranty
- Condensation Removal System
- Wall Mount

OPTIONAL EQUIPMENT

- ModBus Adapter
- 3", 4", 6" Stainless Steel Outside Termination Vent Kit
- 3" Concentric Vent Kit
- 3" Polypro Vent Kit
- 3" Polypro Pipe
- U.L. 353 Compliant Low Water Cutoff w/ Manual Reset
- Alarm System to Monitor Failures
- PC Connection Kit
- Condensate Neutralizer
- System Sensor
- 3 Speed Pump with integrated Flow Check
- LP Conversion Kit