



**Advanced Heating
& Hot Water Systems**

The EnduroTi[®]

COMMERCIAL CONDENSING BOILER

**Superior Construction:
Stainless Steel Titanium Blend**



Stainless Steel AISI 316 Ti

Manufactured out of this extremely durable stainless steel and titanium blend

Up to 93% Thermal Efficiency

Superior Heat Transfer

The reverse flame combustion chamber heats large amounts of hot water

Cascade up to 8 Boilers (with boiler rotation)

Mod/Bus interface for easy BMS system

Small Footprint

Will fit through a standard door opening (ETI-750 model only) Caster wheels on the bottom of the boiler

CSD Compliant

HIGH MASS



10:1 Turndown Ratio

**Direct Flow or
Primary / Secondary Piping**



One of a Kind Design from the Inside, Out!

The EnduroTi

SINGLE BOILER UNITS

Optional Equipment

- System Sensor (7250P-324)
- Indirect Tank Sensor (7250P-325)
- High and Low Gas Pressure Switch Kit with Manual Reset (6300P-991)
- 6" Stainless Steel Outside Termination Vent Kit (V3000)
- Flow Switch Kit (6300P-990)
- Manual Reset High Temperature Limit (6300P-998)
- Alarm System (to monitor any failure) (7350P-602)
- 928 PC Connection Kit with Software (7450P-330)
- Condensate Neutralizer (7350P-611)

Delta T/0-10V

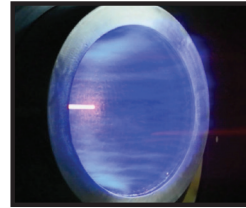
0-10V Output available for variable speed pumps to maintain consistent cooler boiler return temperatures to maximize efficiency

**1,000,000 & 750,000 Btuh Models
Up to 93% Thermal Efficiency**

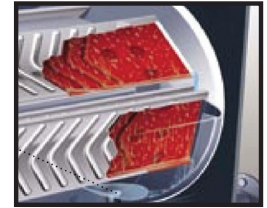


Additional Features

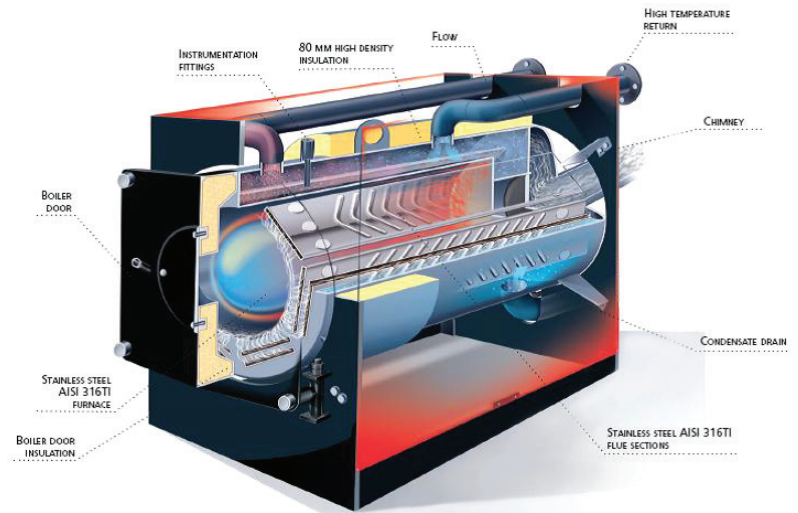
- Superior condensate collection system
- 10 year limited warranty
- Vents in PVC - CPVC - stainless steel – up to 140 equivalent feet (combined intake and exhaust)
- Built-in UL-353 Approved Low Water Cut-Off
- Field wiring connection board / Cascade wiring CAT 3 or 5
- Adjustable leveling
- Dry contact for alarm output
- Blocked vent pressure switch
- Pressure and temperature gauge



The Hyper-Jet Combustion System with Modulating Inward Firing Burner



Corrugated Horizontal Flue Passages: Special surface increases heat exchange area for higher efficiencies



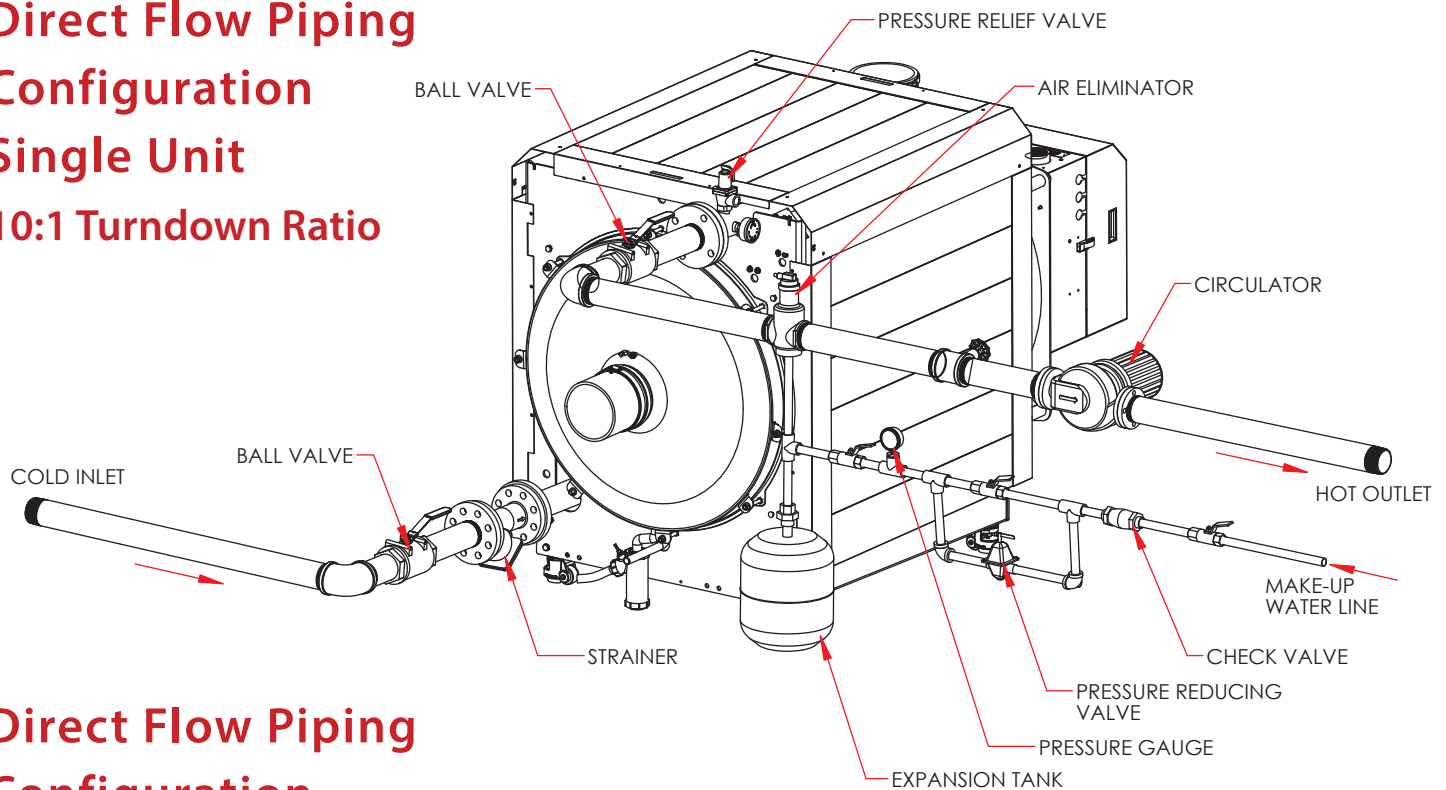
EnduroTi Models	Btuh	Turndown Ratio	Supply & Return Pipe Size	Gas Line Connection	Thermal Efficiency	Vent Diameter	Approx. Shipping Weight
ETI-750	750,000	10 : 1	2"	2"	93.2%	6"	800 LBS
ETI-1000	1,000,000	10 : 1	2.5"	2"	92.5%	6"	950 LBS

The EnduroTi

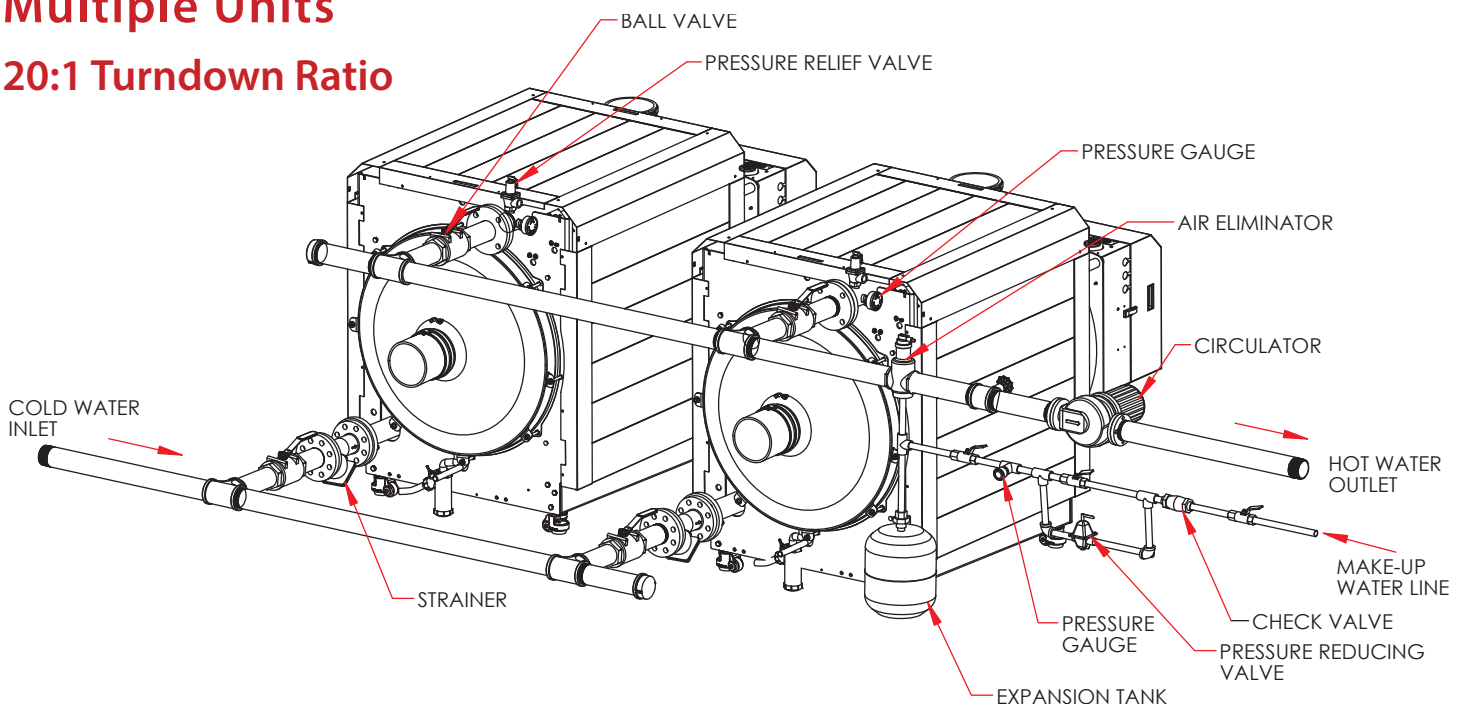
Eliminates the Need for Primary-Secondary Piping

Condensing & Modulation, Large Water Content Heat Exchanger with Virtually No Pressure drop (Under 2 feet of resistance at a 100 GPM Flow) • Cascade up to 8 Boilers

Direct Flow Piping Configuration Single Unit 10:1 Turndown Ratio

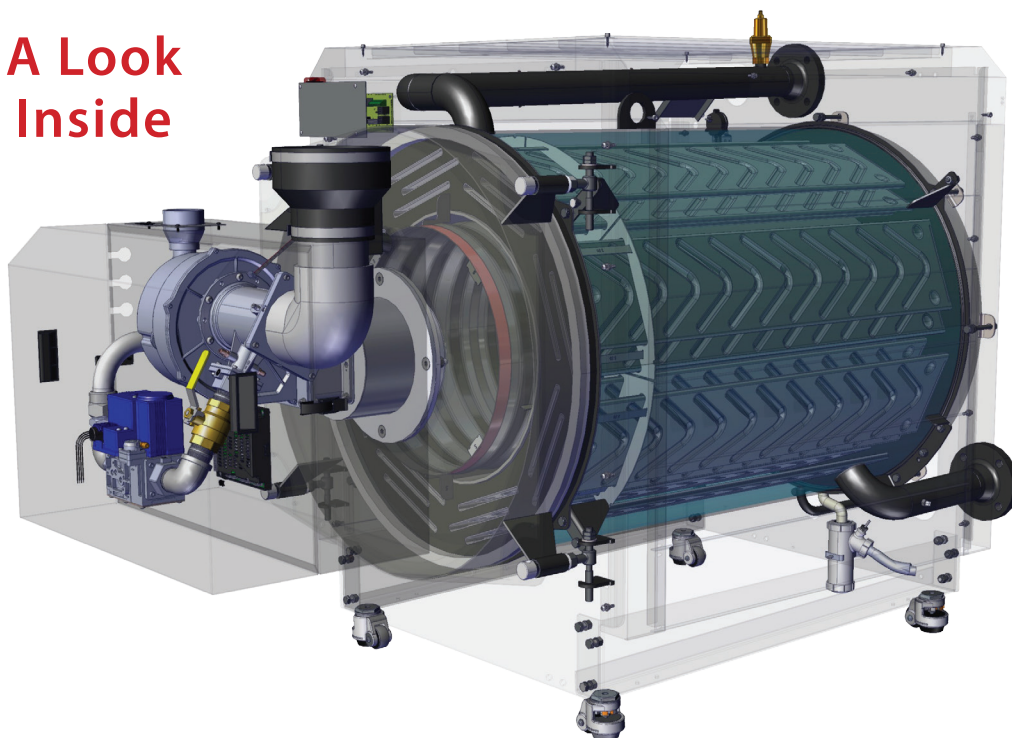


Direct Flow Piping Configuration Multiple Units 20:1 Turndown Ratio



Model	ETI-750	ETI-1000
Gas Connection	2"	2"
Max Gas Pressure	10.5"	10.5"
Min Gas Pressure	3.5"	3.5"
Max Working Pressure	75 psi	75 psi
Electrical Requirements	120 VAC/6 Amp Max	120 VAC/6 Amp Max
Water Connections	2" Flange	2 1/2" Flange
Min. Water Flow (GPM)	7.5	10
Max Water Flow (GPM)	75	100
Water Pressure Drop -Ft of Hd (20 Delta @ Max Fire)	2.85	1.85
Water Volume (Gallons)	38	61
Turndown	10:1	10:1
Air Intake/Exhaust Size	6"	6"
Vent Category	IV	IV
Thermal Efficiency	93.2%	92.5%
Approx Shipping Weight	800	950
Vent Materials	PVC, CPVC, Polypropylene, or AL29-4C	

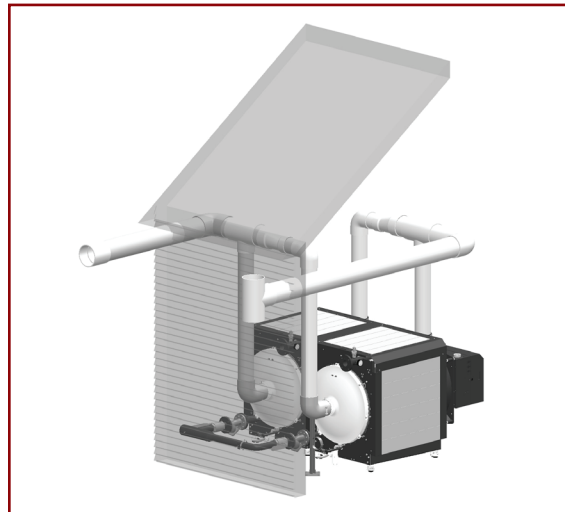
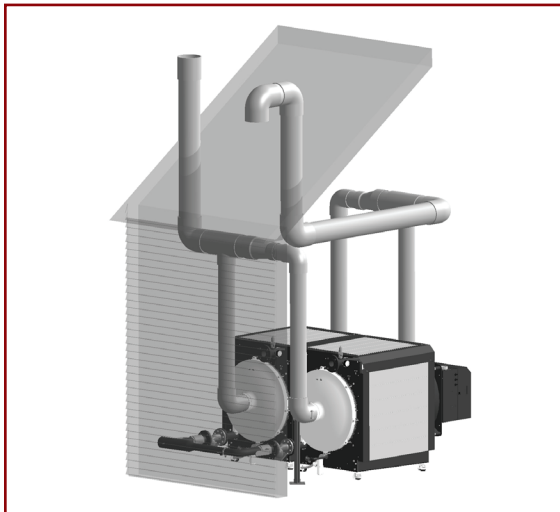
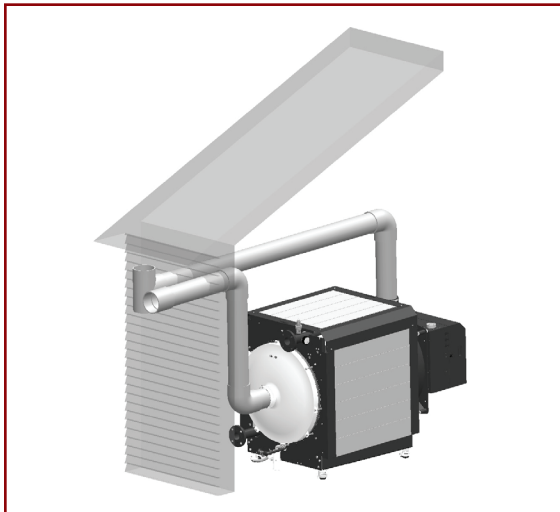
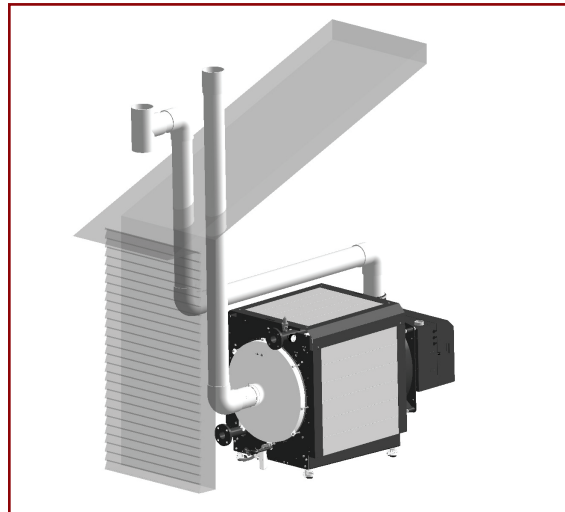
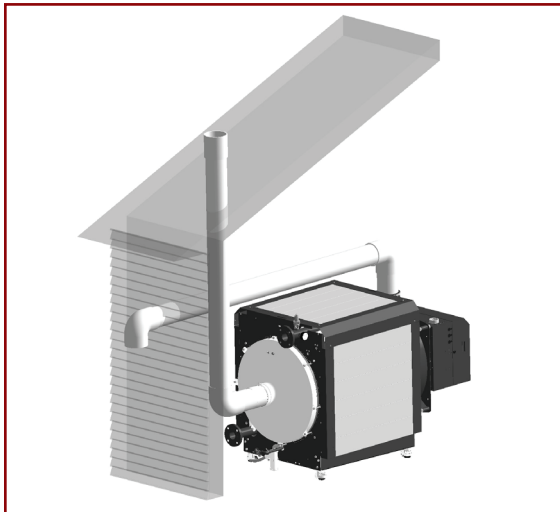
A Look Inside



The EnduroTi

Vent Configurations - Installation Flexibility

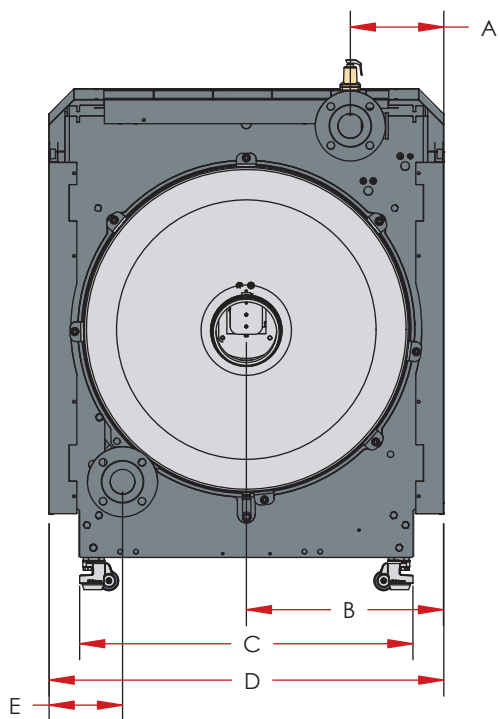
Low Cost Install - Easy to fit into Most Spaces
Multiple Piping and Venting Options



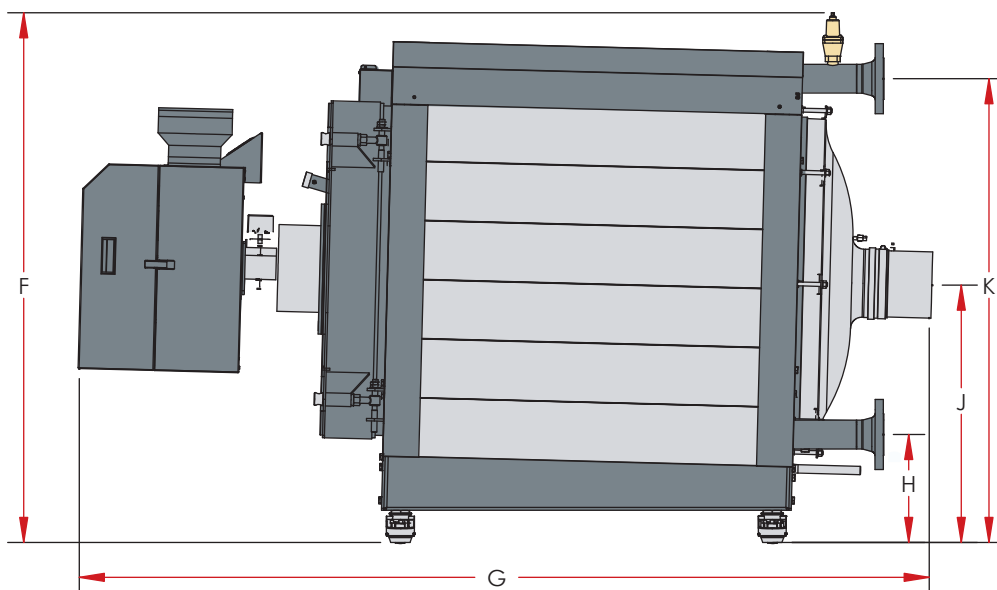
Dimensions

Single Unit Models	A	B	C	D	E	F	G	H	J	K	L	M
ETI-750	8.5"	16.5"	30.75"	32.75"	8.5"	49"	83"	8.25"	25"	43"	6.25"	13.75"
ETI-1000	9.25"	19.75"	36.25"	39.5"	7.25"	53"	85"	10.75"	25.75"	46.25"	6.25"	13.75"

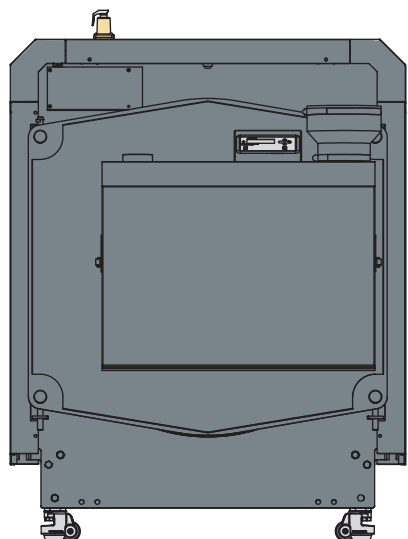
PLEASE NOTE: ALL DIMENSIONS ARE PRELIMINARY AND APPROXIMATE



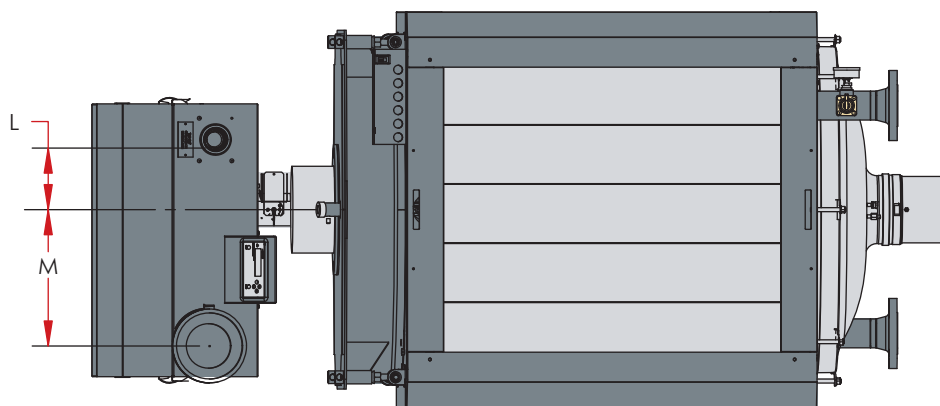
REAR VIEW



SIDE VIEW



FRONT VIEW



TOP VIEW