



Advanced Heating
& Hot Water Systems

EVERLAST

GRID-ENABLED

316L Stainless Steel Electric Water Heater

For use as part of an electric thermal storage or demand response program

These units feature a disconnect and they ship with the lower heating element disabled as required by the law regulating grid-enabled water heaters. The disconnect is housed in a locked box, utilizing locks commonly used by utilities. The element can only be enabled by a utility company or program operator.

PREMIUM TANK CONSTRUCTION FOR LONG LIFE:

- 316L stainless steel tank
- Titanium elements for best corrosion resistance
- Heavy duty foam insulation for minimal heat loss

SIMPLE AND FAST LOCKOUT BOX SOLUTION:

- Leaves factory with lower element assembly locked
- Can be unlocked in less than 30 seconds
- Installs like a traditional electric water heater
- Can be configured for different operating voltages/inputs
- No new/unique software or controls are required
- Complies with Law 114-11 The Energy Efficiency Improvement Act of 2015



STANDARD FEATURES

- Stainless Steel Tank
- Heavy Duty Insulation
- Electrical Connection Box
- Limited LIFETIME Warranty
(10 year warranty if not registered online)

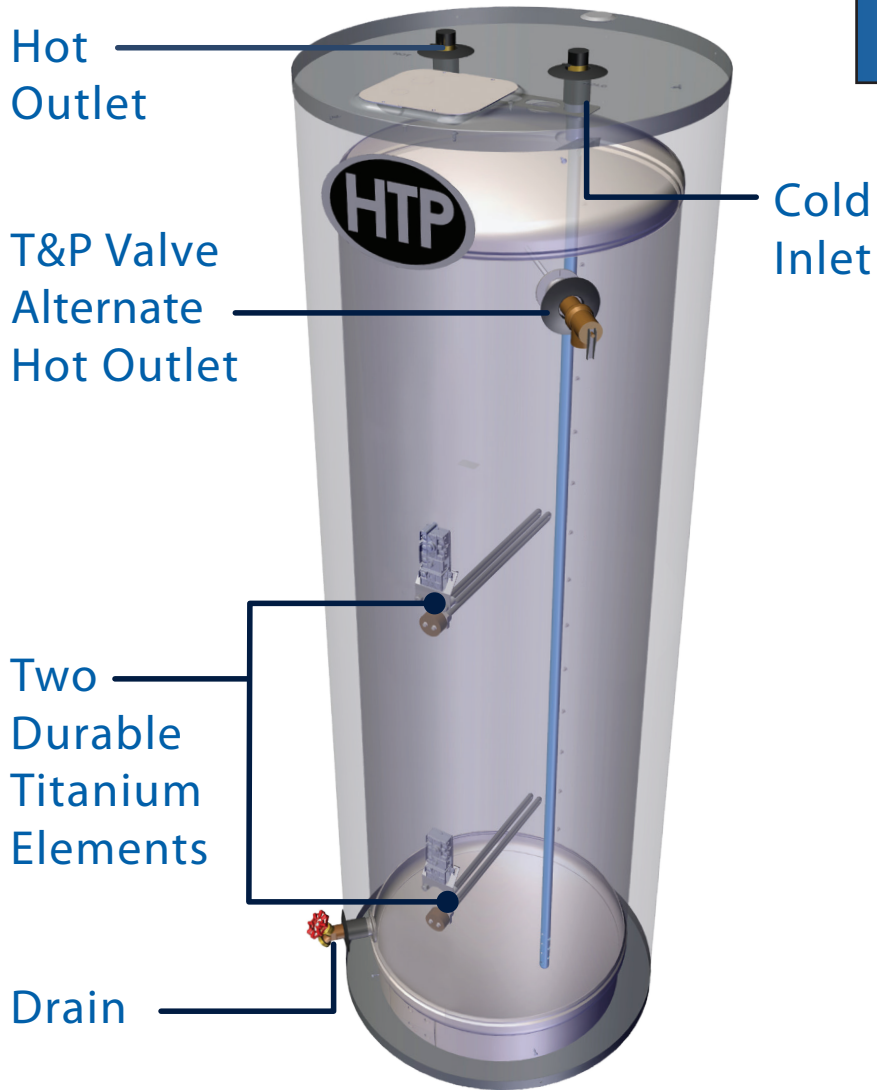
IN THE BOX

- T & P Relief Valve
- Installation Manual
- Brass Full Port Drain Valve
- Lockout Box & Lock



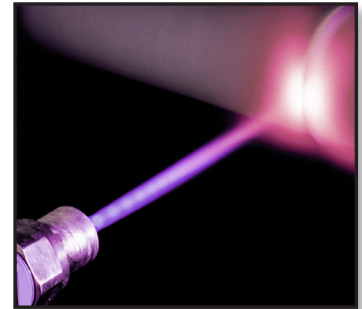
Industry Best Lifetime Warranty (with online registration)

A Closer Look



The Inlet & Outlet have Built in Heat Traps, Keeping the Heat in the Tank for Greater Efficiency

316L Stainless Steel - Laser Welded Tank



Our Components are Made of Durable Materials:

Inlet and Outlet Nipples Constructed of Durable Brass

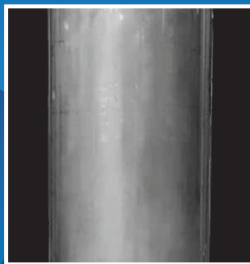
Titanium Elements

316 L Stainless Steel Tank Construction

Made with High Grade 316L Stainless Steel Materials

The Advantages

Stainless Steel VS Glass-Lined



HTP's
Stainless Steel Tank
Lightweight



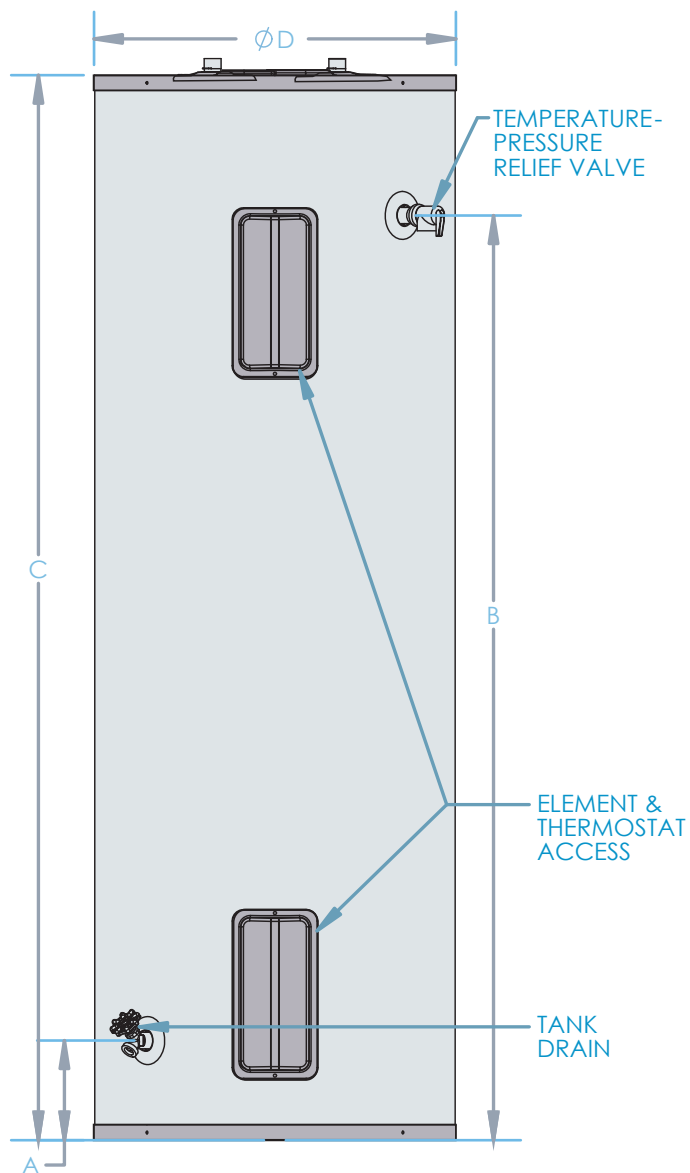
Top Competitor's
Glass-lined Tank
Very Heavy

Minimizes Scale Build Up
Prolongs Tank Life
No Need for Anode Rods
Lightweight Construction

NO Anode Rods Needed!

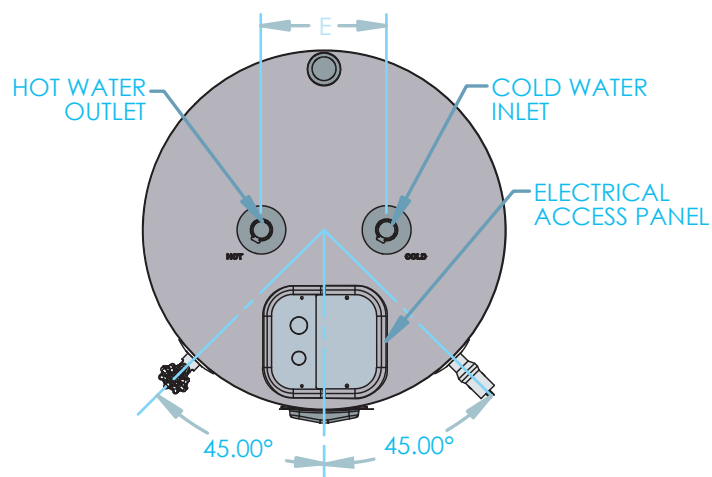
All coated tanks require anodes to delay the inevitable corrosion and tank failure. The average residential water heater lasts about 13 years. The Everlast stainless steel tank will outlast any coated steel tank in the market.





Specifications

The Inlet & Outlet have Built in Heat Traps, Keeping the Heat in the Tank for Greater Efficiency



NO ANODE RODS NEEDED
RESISTS SCALE BUILD UP
LIGHT WEIGHT

SPECIFICATIONS AND DIMENSIONS									WATER TEMPERATURE RATINGS		
Grid-Enabled Models*	Nominal Gallon	DOE Rated Storage Vol. (Gal)	A	B	C	D	E	Hot / Cold Inlets	Minimum Delivered Temp.	Maximum Delivered Temp.	High Temp. Limit
EVG080C2X045H	80	78	6.5"	60"	69"	23.25"	8"	¾" NPT	110°F 43.3°C	170°F 76.7°C	190°F 87.8°C
EVG080C2X055H											
EVG100C2X045H	100	96	7.25"	52"	61"	27"					
EVG100C2X055H											
EVG115C2X045H	115	111	7.25"	60.25	70.5"	27"					
EVG115C2X055H											

Grid-Enabled Models*	Wattage		Safety Listing	First Hour Rating	First Hour Rating Bin	Recovery Efficiency	Recovery @ 90° F Rise	UEF	Shipping Weight
	240v	208v							
EVG080C2X045H	4500	3400	UL174	86 Gallons	High	98%	20 Gallons	.93	151 lbs
EVG080C2X055H	5500	4100		91 Gallons			25 Gallons		
EVG100C2X045H	4500	3400		86 Gallons	High	98%	20 Gallons	.93	206 lbs
EVG100C2X055H	5500	4100		91 Gallons			25 Gallons		
EVG115C2X045H	4500	3400		101 Gallons	High	98%	20 Gallons	.90	224 lbs
EVG115C2X055H	5500	4100		106 Gallons			25 Gallons		

* Order without the "H" suffix for low temperature models with operating temperature range of 90°F -150°F

In accordance with our company policy of ongoing product improvement, HTP Inc. reserves the right to make changes without prior notice. www.htproducts.com • MKTLIT-XX • 06 / 2017 © HTP