



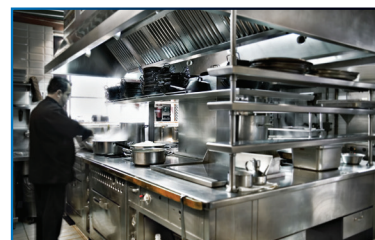
Advanced Heating
& Hot Water Systems

EVERLAST[®]

MEDIUM DUTY COMMERCIAL

316L Stainless Steel Electric Water Heater

- Three tank capacities offered in 80, 100 & 115 gallon sizes
- Multiple wiring configurations for installation versatility, to meet any job requirement
- Terminal block for ease of field wiring
- Internally fused for added protection
- Durable steel enclosure - hinged cover provides easy access to internal fuses and wiring
- **3 TITANIUM ELEMENTS** provide additional capacity for longer continuous operation and quicker recovery between hot water draws



NO ANODE
RODS NEEDED
EXCLUSIVE TITANIUM
LOW-DENSITY
HEATING ELEMENTS
LIGHTWEIGHT
RESISTS SCALE
BUILD-UP

3 Element Design • 316L Stainless Steel

EVERLAST®

Stainless Steel Electric Commercial Water Heater

The **Everlast Medium Duty Commercial Electric Water Heater** combines high quality stainless steel construction and energy efficient operation, providing long draws of hot water without consuming large amounts of energy. Durable components, low standby heat losses, high recovery rates, and the industry's strongest warranty make the Everlast Commercial Electric Water Heater an ideal choice for electric water heating needs.

THERMOSTAT AND HIGH LIMIT CONTROLS:

Adjustable temperature range up to 181°F on all models

THE FINEST PROTECTION:

Laser welded with a concentrated heat source producing high quality, long-lasting welded joints. 316L stainless steel tank (**lightweight**) - Superior corrosion resistance, eliminates the need for anode rods, protects against harsh water conditions for a lifetime of durability against leaks - **Limited 10 year warranty** (with online registration, 5 years if not registered)

MINIMAL HEAT LOSS:

Heavy-duty insulation
3" on the top & 2" on the sides

TITANIUM ELEMENTS:

Low watt density, Titanium elements increase corrosion resistance and helps prevent scale build-up for longer element life versus conventional elements - **98% efficient heat transfer**

NO ANODE
RODS NEEDED
RESISTS
SCALE BUILD UP
LIGHT
WEIGHT



STANDARD FEATURES

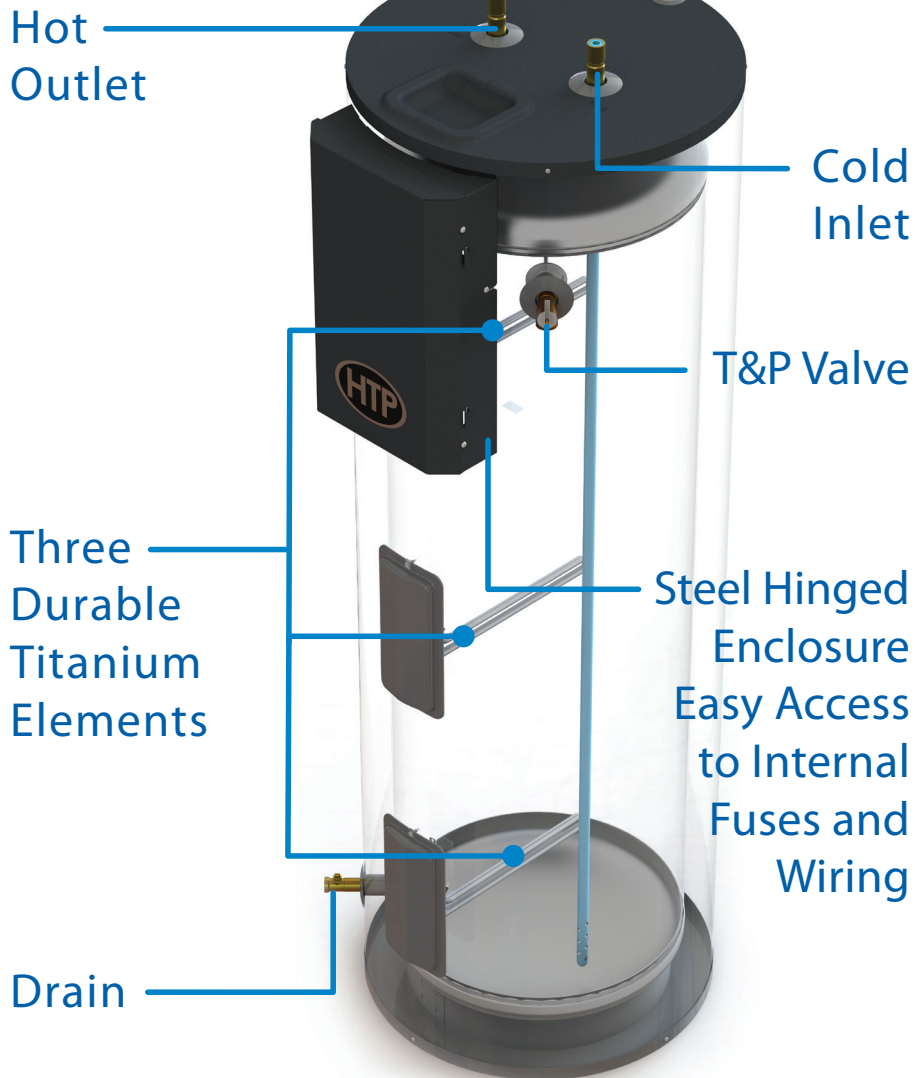
- 316L Stainless Steel Tank
- Heavy Duty Insulation
- Heat Traps
- 3 Titanium Elements
- Electrical Connection Box
- Limited 10 Year Warranty
(with online registration, 5 year warranty if not registered)

IN THE BOX

- T & P Relief Valve
 - Installation Manual
 - Brass Full Port Drain Valve
 - Dip Tube & Outlet Nipple
-
- Thermostat and high limit controls / Adjustable temperature range
 - Provides the finest protection against harsh water conditions with the best warranty in the industry
 - Directs cold water to the bottom of the tank and minimizes mixing of cold water providing long draws of hot water
 - Single phase or 3 phase operation • Field convertible (80-100-115 Models)

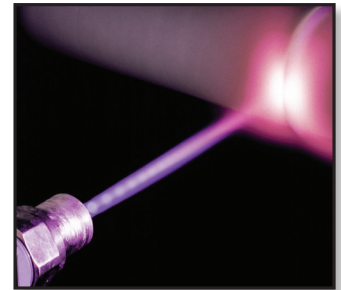


A Closer Look



The Inlet & Outlet have Built in Heat Traps, Keeping the Heat in the Tank for Greater Efficiency

316L Stainless Steel - Laser Welded Tank



Our Components are Made of Durable Materials:

Inlet and Outlet Nipples Constructed of Durable Brass

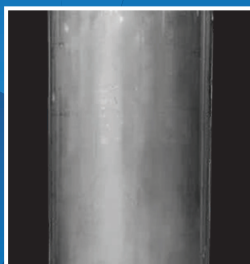
Titanium Elements

316 L Stainless Steel Tank Construction

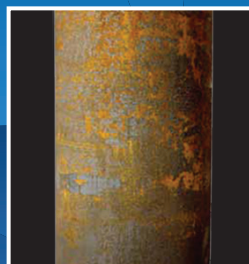
Made with High Grade 316L Stainless Steel Materials

The Advantages

Stainless Steel VS Glass-Lined



HTP's Stainless Steel Tank
Lightweight



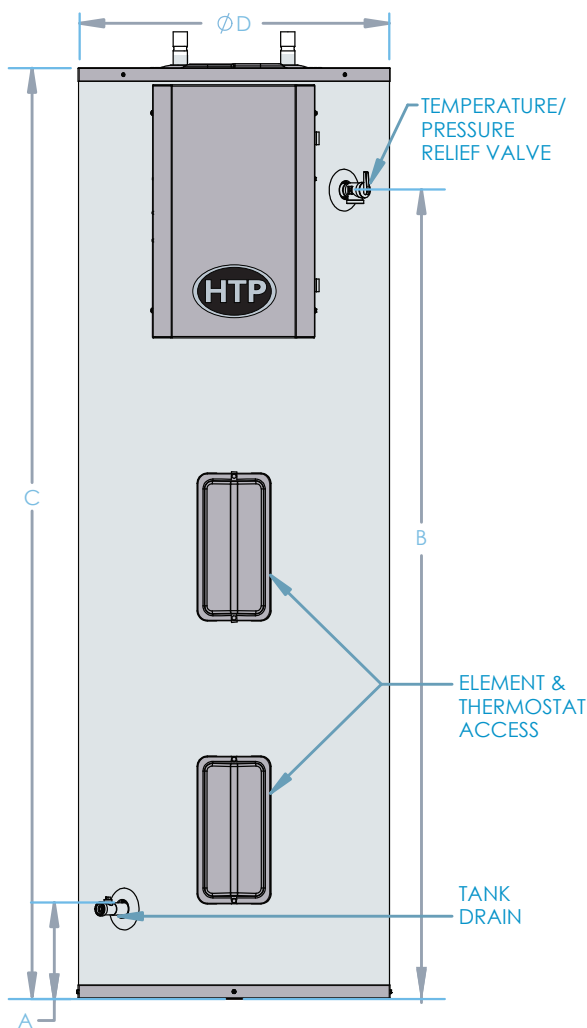
Top Competitor's Glass-lined Tank
Very Heavy

Minimizes Scale Build Up
Prolongs Tank Life
No Need for Anode Rods
Lightweight Construction

NO Anode Rods Needed!

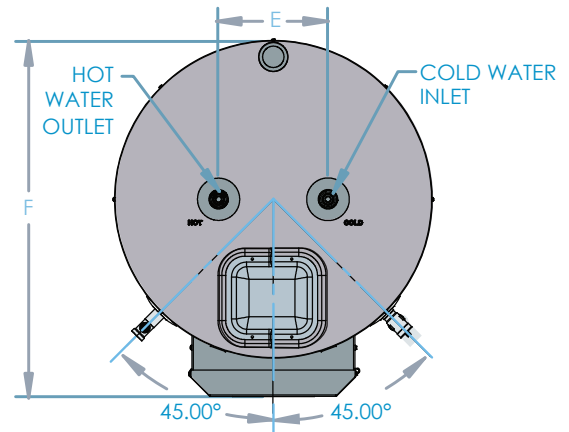
All coated tanks require anodes to delay the inevitable corrosion and tank failure. The average residential water heater lasts about 13 years. The Everlast stainless steel tank will outlast any coated steel tank in the market.





Specifications

The Inlet & Outlet have Built in Heat Traps, Keeping the Heat in the Tank for Greater Efficiency



Limited 10 Year Warranty

with online registration, 5 years if not registered



Specifications and Dimensions											Water Temperature Ratings		
Models	Volts/ Watts	Gal.	A	B	C	D	E	F	Hot / Cold Inlets	Shipping Weight (Est.)	Minimum Delivered Temp.	Maximum Delivered Temp.	High Temp. Limit
EVC080C3W135	240 / 13,500	80	6.5"	60"	69"	23.25"	8"	26"	3/4" NPT	165 lbs	135°F 57.2°C	181°F 82.8°C	200°F 93.3°C
EVC080C3W165	240 / 16,500												
EVC080D3W180	277 / 18,000												
EVC080E3W180	480 / 18,000												
EVC100C3W135	240 / 13,500	100	7.25"	52"	61"	27"	8"	30"	3/4" NPT	220 lbs	135°F 57.2°C	181°F 82.8°C	200°F 93.3°C
EVC100C3W165	240 / 16,500												
EVC0100D3W180	277 / 18,000												
EVC0100E3W180	480 / 18,000												
EVC115C3W135	240 / 13,500	115	7.25"	60"	69"	27"	8"	30"	3/4" NPT	240 lbs	135°F 57.2°C	181°F 82.8°C	200°F 93.3°C
EVC115C3W165	240 / 16,500												
EVC115D3W180	277 / 18,000												
EVC115E3W180	480 / 18,000												

Optional Element Kits (Sold Separately)					
Gallons	Input (watts)	208v	240v	277v	480v
80 100 115	12,500	B3W125	NO	NO	NO
	13,500	B3W135	C3W135 (standard)		E3W135
	14,000	NO	NO	D3W140	NO
	15,000		C3W150	D3W150	E3W150
	16,000		NO	D3W160	NO
	16,500		C3W165 (standard)	NO	E3W165
	18,000		NO	D3W180 (standard)	E3W180 (standard)