



Advanced Heating  
& Hot Water Systems

# EVERLAST<sup>®</sup>

LIGHT DUTY  
COMMERCIAL

## Stainless Steel Electric Water Heater

BUILT  
TO LAST  
LONGER

80, 100  
& 115  
Gallon Tanks

NO ANODE  
RODS NEEDED  
RESISTS  
SCALE BUILD UP  
LIGHT  
WEIGHT



Industry Best Lifetime Warranty (with online registration)

# EVERLAST®

## Stainless Steel Electric Commercial Water Heater

The **Everlast Commercial Electric Water Heater** combines high quality stainless steel construction and energy efficient operation, providing long draws of hot water without consuming large amounts of energy. Durable components, low standby heat losses, high recovery rates, and the industry's strongest warranty make the Everlast Commercial Electric Water Heater an ideal choice for electric water heating needs.

### THERMOSTAT AND HIGH LIMIT CONTROLS:

Commercial Temp: Min 120°F Max 181°F

### HOT WATER CONNECTION:

Outlet connection on the top of the tank (with built in Heat Traps)

### THE FINEST PROTECTION:

**Laser welded** through a concentrated heat source producing high quality, long lasting, 316L stainless steel tank construction (**lightweight**) - Superior corrosion resistance, eliminates the need for anode rods, protects against harsh water conditions for a lifetime of durability against leaks - Fantastic Limited Warranty

### MINIMAL HEAT LOSS:

Heavy-duty insulation

### TITANIUM ELEMENTS:

TITANIUM screw plugs; Increases corrosion resistance for extended, longer element life



#### STANDARD FEATURES

- Stainless Steel Tank
- Heavy Duty Insulation
- Electrical Connection Box
- 2 Titanium Elements
- Limited LIFETIME Warranty for Light Commercial Unit

(6 year warranty if not registered online)

#### IN THE BOX

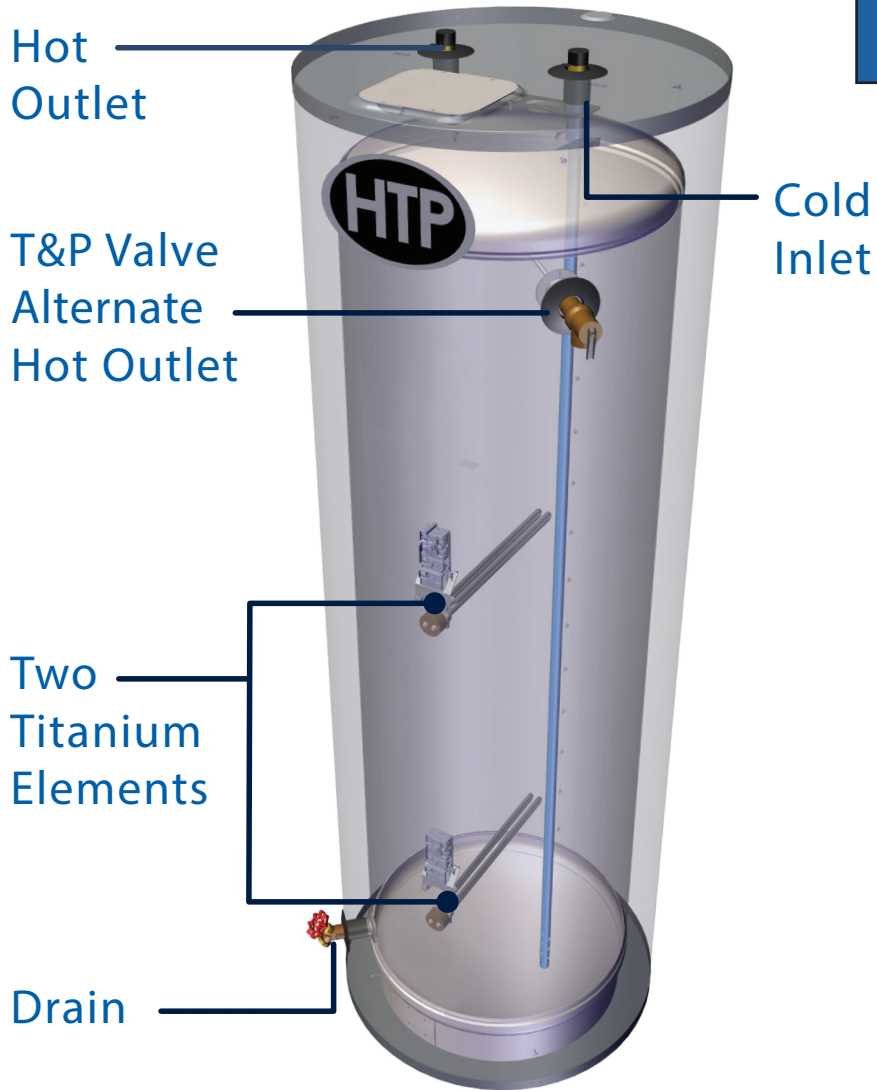
- T & P Relief Valve
- Installation Manual
- Brass Full Port Drain Valve

NO ANODE  
RODS NEEDED

RESISTS  
SCALE BUILD UP  
LIGHT  
WEIGHT

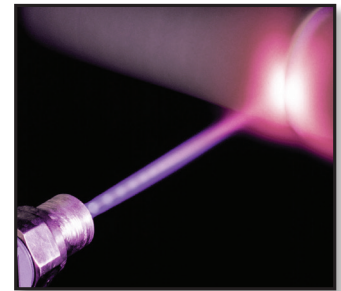


## A Closer Look



The Inlet & Outlet have Built in Heat Traps, Keeping the Heat in the Tank for Greater Efficiency

## 316L Stainless Steel - Laser Welded Tank



**Our Components are Made of Durable Materials:**

Inlet and Outlet Nipples Constructed of Durable Brass

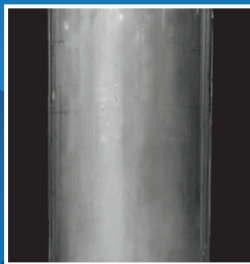
Titanium Elements

316 L Stainless Steel Tank Construction

**Made with High Grade 316L Stainless Steel Materials**

### The Advantages

#### Stainless Steel VS Glass-Lined



HTP's  
Stainless Steel Tank  
Lightweight



Top Competitor's  
Glass-lined Tank  
Very Heavy

Minimizes Scale Build Up  
Prolongs Tank Life  
No Need for Anode Rods  
Lightweight Construction

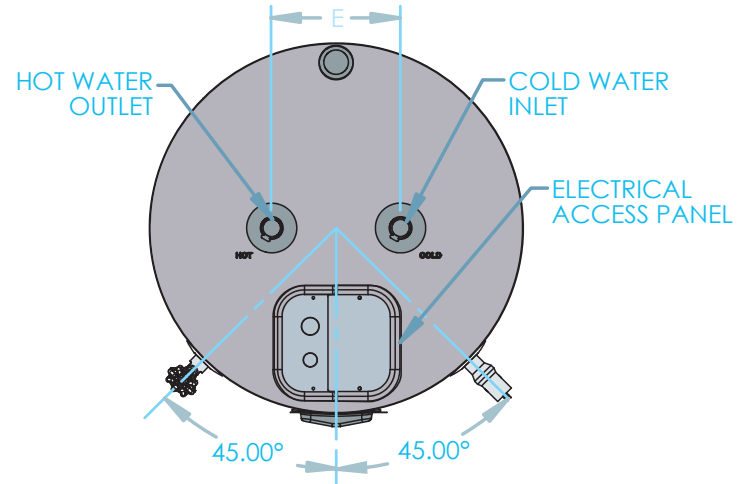
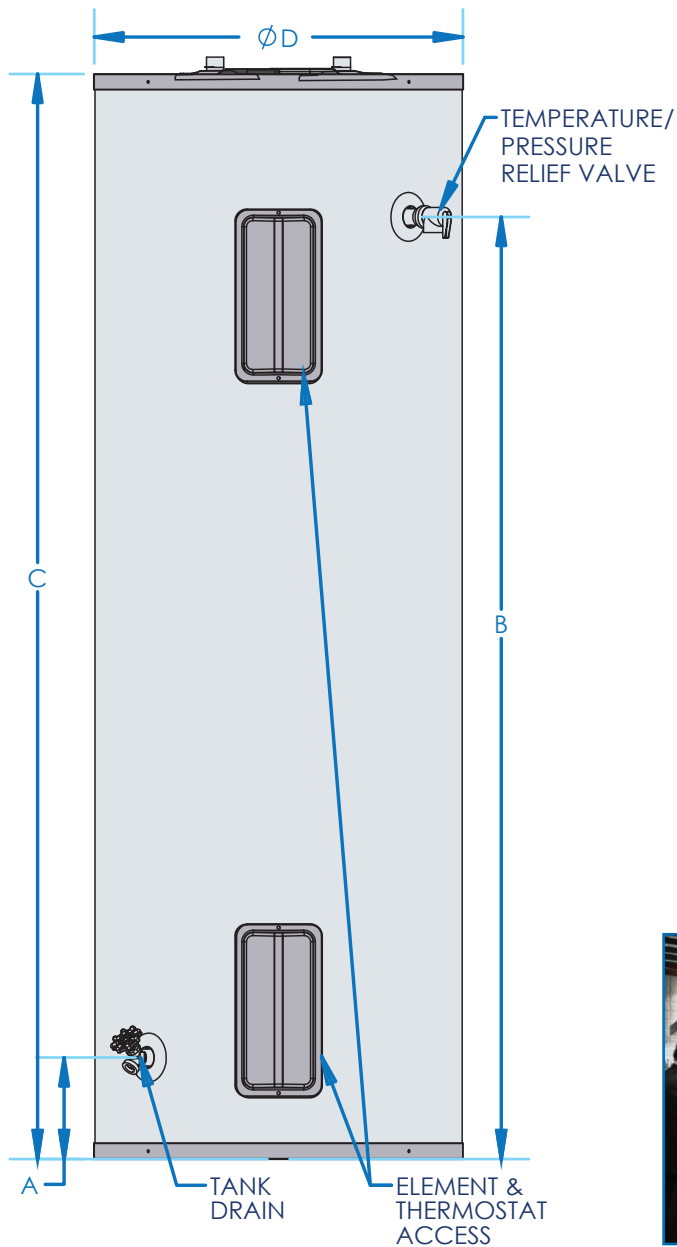
### NO Anode Rods Needed!

All coated tanks require anodes to delay the inevitable corrosion and tank failure. The average residential water heater lasts about 13 years. The Everlast stainless steel tank will outlast any coated steel tank in the market.



# Specifications

The Inlet & Outlet have Built in Heat Traps, Keeping the Heat in the Tank for Greater Efficiency



## Commercial



SPECIFICATIONS AND DIMENSIONS								WATER TEMPERATURE RATINGS		
Models	Gal.	A	B	C	D	E	Hot / Cold Inlets	Minimum Delivered Temp.	Maximum Delivered Temp.	High Temp. Limit
EVC080C2X045	80	6.5"	60"	69"	23.25"	8"	3/4" NPT	120°F 48.8°C	181°F 82.8°C	200°F 93.3°C
EVC080C2X055										
EVC100C2X045	100	7.25"	52"	61"	27"					
EVC100C2X055										
EVC115C2X045	115	7.25"	60.25	70.5"	27"					
EVC115C2X055										

Light Commercial Models	Wattage	Voltage	Safety Listing	First Hour Delivery	Recovery @ 90° F Rise	Thermal Efficiency	Shipping Weight
EVC080C2X045	4500	240	UL1453	84 Gallons	20 Gallons	98%	151 lbs
EVC080C2X055	5500			89 Gallons	25 Gallons		
EVC100C2X045	4500	240		87 Gallons	20 Gallons	98%	206 lbs
EVC100C2X055	5500			92 Gallons	25 Gallons		
EVC115C2X045	4500	240		105 Gallons	20 Gallons	98%	224 lbs
EVC115C2X055	5500			110 Gallons	25 Gallons		