



Advanced Heating  
& Hot Water Systems

[www.htproducts.com](http://www.htproducts.com)

# EVERLAST®

## RESIDENTIAL

### Stainless Steel Electric Water Heater

BUILT  
TO LAST  
LONGER

40 Gallons  
and  
52 Gallons



Limited 8 Year,  
12 Year or  
LIFETIME  
Residential  
Warranty Options  
(with online registration)

NO ANODE  
RODS NEEDED  
RESISTS  
SCALE BUILD UP  
LIGHT  
WEIGHT

Industry Best Lifetime Warranty

# EVERLAST®

## Stainless Steel Electric Water Heater

### THERMOSTAT AND HIGH LIMIT CONTROLS:

Residential Temp: Min 110°F Max 150°F

### HOT WATER CONNECTION:

Outlet connection on the top of the tank (with built in Heat Traps)

### THE FINEST PROTECTION:

**Laser welded** through a concentrated heat source producing high quality, long lasting, 316L stainless steel tank construction (**lightweight**) - Superior corrosion resistance, eliminates the need for anode rods, protects against harsh water conditions for a lifetime of durability against leaks - Fantastic Limited Warranty

### MINIMAL HEAT LOSS:

Heavy-duty insulation

### TITANIUM ELEMENTS:

Low watt operation; Highest quality titanium elements; Increases corrosion resistance for extended, longer element life



### STANDARD FEATURES

- 316L Stainless Steel Tank
- Heavy Duty Insulation
- Electrical Connection Box
- 2 Titanium Elements
- Limited 8 Year, 12 Year or Lifetime Residential Warranty Options (When registered online) for Residential Unit

### IN THE BOX

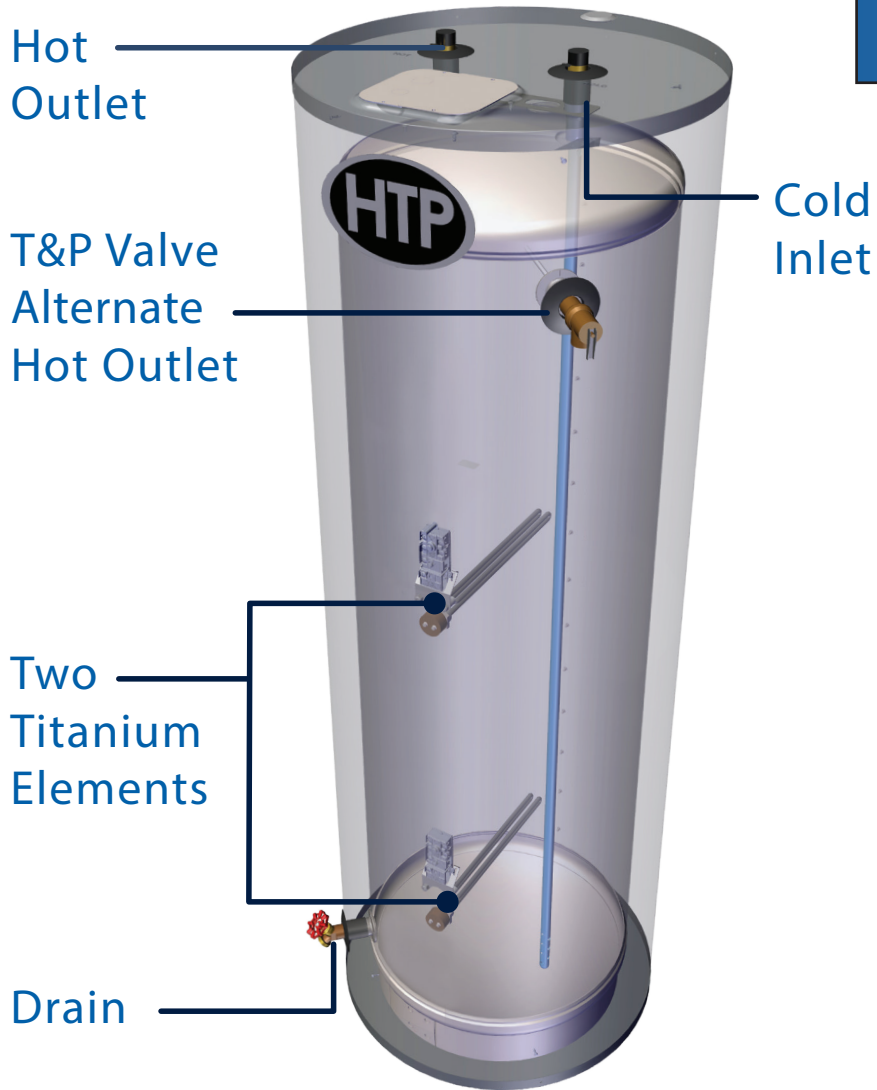
- T & P Relief Valve
- Installation Manual
- Brass Full Port Drain Valve

**NO ANODE  
RODS NEEDED**  
RESISTS  
SCALE BUILD UP  
**LIGHT-  
WEIGHT**

## EVERLAST ELECTRIC : 316L STAINLESS STEEL WATER HEATER

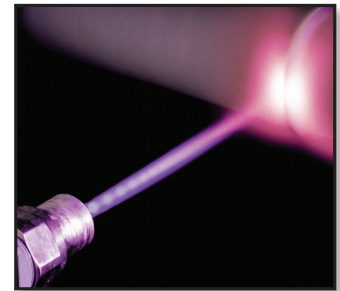
The Everlast Electric Water Heater combines high quality stainless steel construction and energy efficient operation, providing long draws of hot water without consuming large amounts of energy. A cleverly designed water connection directs cold water to the heating element near the bottom of the tank to minimize the mixing of cold and hot water. Durable components, low standby heat losses, high recovery rates, and the industry's strongest warranty make the Everlast Electric Water Heater an ideal choice for electric water heating needs.

## A Closer Look



The Inlet & Outlet have Built in Heat Traps, Keeping the Heat in the Tank for Greater Efficiency

## 316L Stainless Steel - Laser Welded Tank



**Our Components are Made of Durable Materials:**

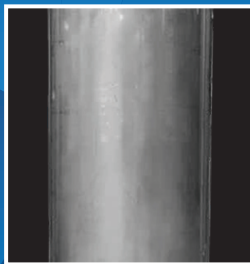
Inlet and Outlet Nipples Constructed of Durable Brass

Titanium Elements

**Made with High Grade 316L Stainless Steel Materials**

### The Advantages

#### Stainless Steel VS Glass-Lined



HTP's Stainless Steel Tank  
Lightweight



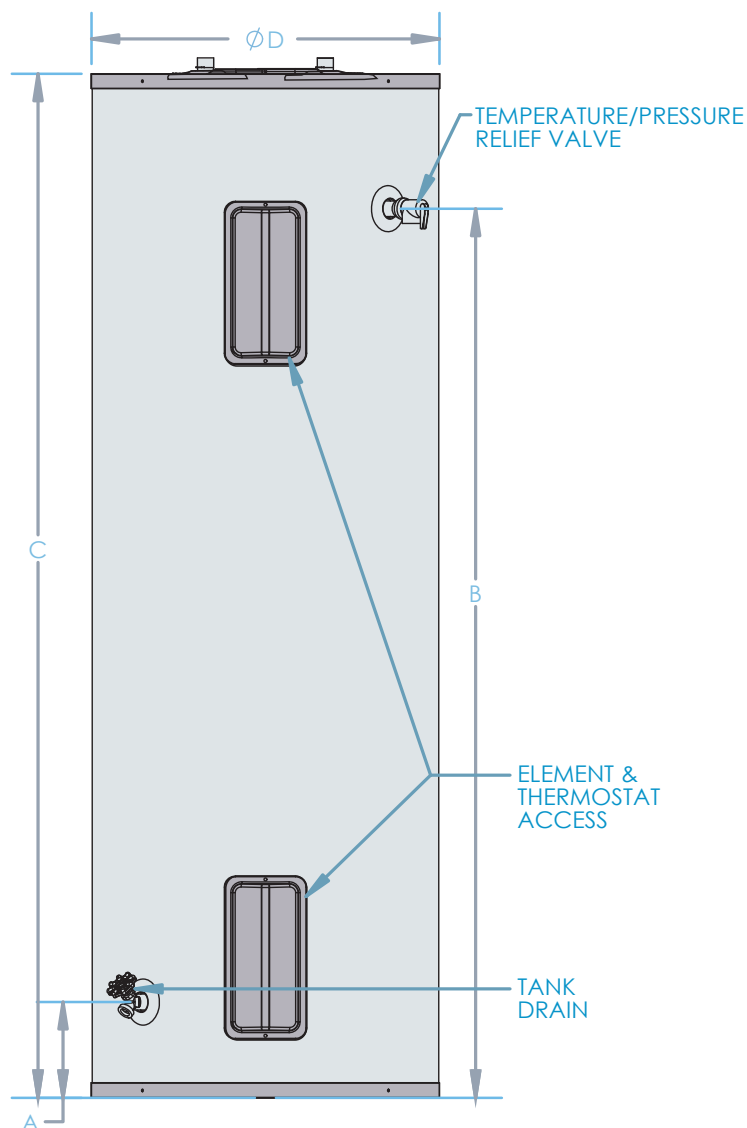
Top Competitor's Glass-lined Tank  
Very Heavy

Minimizes Scale Build Up  
Prolongs Tank Life  
No Need for Anode Rods  
Lightweight Construction

### NO Anode Rods Needed!

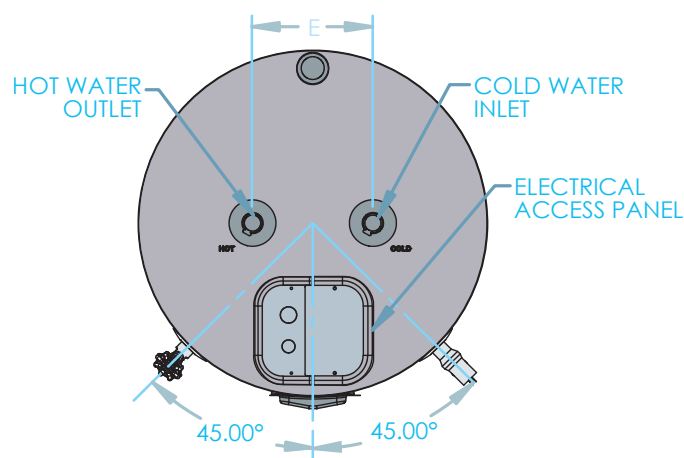
All coated tanks require anodes to delay the inevitable corrosion and tank failure. The average residential water heater lasts about 13 years. The Everlast stainless steel tank will outlast any coated steel tank in the market.





# Specifications

The Inlet & Outlet have Built in Heat Traps, Keeping the Heat in the Tank for Greater Efficiency



SPECIFICATIONS AND DIMENSIONS								WATER TEMPERATURE RATINGS		
Models	Nominal Gallon	DOE Rated Storage Vol. (Gal)	A	B	C	D	E	Minimum Delivered Temp.	Maximum Delivered Temp.	High Temp. Limit
EVR040C2X045*	40	39	5.75"	46"	54.25"	19.5"	8"	110°F 43.3°C	150°F 65.5°C	170°F 76.6°C
EVR040C2X055*										
EVR052C2X045*	52	48	5.75"	58.25"	66.75"	19.5"	8"	110°F 43.3°C	150°F 65.5°C	170°F 76.6°C
EVR052C2X055*										

Residential Models	Wattage	Voltage	Safety Listing	AHRI First Hour Rating	First Hour Bin	Recovery Efficiency	Recovery @ 90° F Rise	UEF / EF	Shipping Weight
EVR040C2X045*	4500	240	UL174	58 Gallons	Medium	98%	20 Gallons	.94 /.95	104 lbs
EVR040C2X055*	5500			58 Gallons			25 Gallons		
EVR052C2X045*	4500	240		62 Gallons	Medium	98%	20 Gallons	.93 /.94	118 lbs
EVR052C2X055*	5500			62 Gallons			25 Gallons		

\*Add a "N08" or a "N12" to the end of the model number for 8 and 12 year warranty options.

Energy Factor based on D.O.E. (Department of Energy) test procedures. Heaters furnished with standard 240 volt AC, single phase non-simultaneous wiring.  
In accordance with our company policy of ongoing product improvement, HTP Comfort Solutions LLC. reserves the right to make changes without prior notice. • MKTLIT-59 • 07/2019 © HTP Comfort Solutions LLC.