



Versa-Hydro Combination Hydronic Appliance

JOB NAME:

LOCATION:

ARCH. / ENGR:

WHOLESALER:

MECH. CONTRACTOR:

MODEL NUMBER:

TYPE OF GAS:

BTU/HR INPUT LOW – HIGH FIRE:

NOTES:

Tank/Combustion Heat Exchanger

- Storage Tank 316L Stainless Steel Construction
- 90/10 Copper Nickel Heat Exchanger
- Front service access to combustion chamber and burner

Combustion System

- Modulating burner based on heat demand
- Up to 5 to 1 turn down ratio
- 96% Thermal Efficiency (All Models)
- 98% Combustion Efficiency
- High Grade Inconel Burner
- Spark Ignition
- Models Available for Natural or LP Gas

Hydronic Heating Module

- Pre-Plumbed Hydronic Module with Brazed Plate Heat Exchanger
- System Line Connection of 1" NPT
- Working System Pressure of 15 PSI
- Pressure Relief Valve designed to relieve pressure greater than 30 PSI (Higher relief valve capacities available)

Control System

- Total System Control – Monitors Outdoor Temperature -Tank Temperature and Heating Module Outlet Temperature to match system design
- Password Protected
- Outdoor reset with Indirect Priority
- Modulating Pump Control on Heating Module
- 24 Volt monitoring

Additional Features

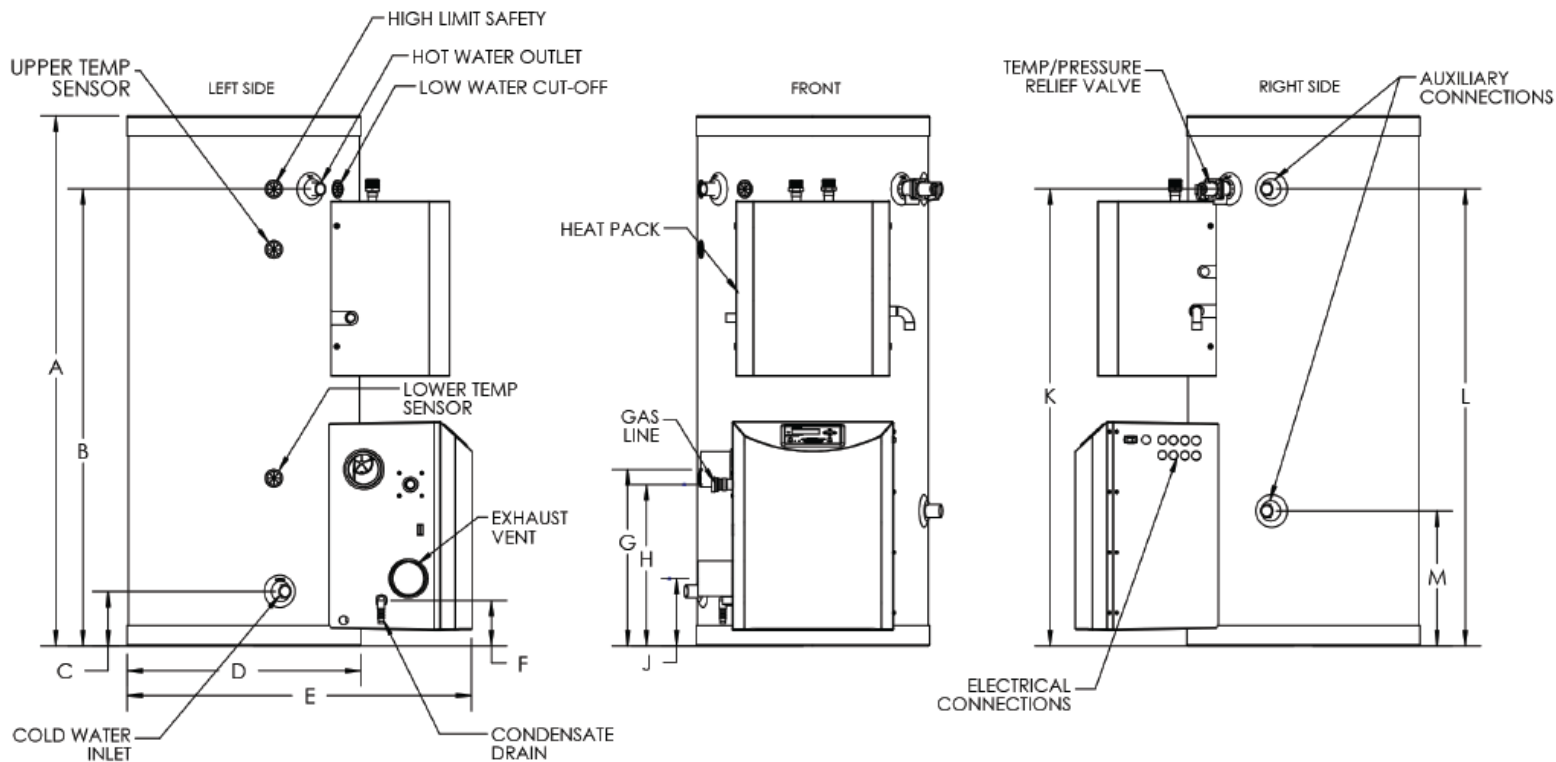
- Built in Condensate trap
- Mixing valve Certified to ASSE 1017
- Vents in Plastic PVC - CPVC - Stainless Steel – ULC S636 flexible polypropylene vent liner (chimney lining only)
- 12 Year Limited Warranty
- Built In Low Water Cut – Off
- Manual Reset High Temperature Limit
- Dry Contact for Alarm Output
- Lead Free Compliant, as required by the Safe Drinking Water Act, Section 1417

Certifications

- ETL Listed
- AHRI Certified
- CSA Listed Controls
- Low NOx emissions – SCAQMD Certified

Optional Equipment

- Outdoor Sensor (Part # 7250P-319)
- 2" PVC Concentric Vent Kit (Part # KGAVT0501CVT)
- 3" PVC Concentric Vent Kit (Part # KGAVT0601CVT)
- 2" Stainless Steel Outside Termination Vent Kit (Part # V500)
- 3" Stainless Steel Outside Termination Vent Kit (Part # V1000)
- 4" Stainless Steel Outside Termination Vent Kit (Part # V3000)
- Condensate Neutralizer (Part # 7450P-212)
- PC Connection Cable w / Software (Part # 7250P-738)
- Alarm System to monitor any failure (Part # 7350P-602)



VERSA-HYDRO WATER HEATER DIMENSIONS

MODEL #*	GALLONS	A	B	C	D	E	F	G	H	J	K	L	M
PHE130-55 / PHE199-55	55	53"	45"	5"	23"	34"	4"	17-1/2"	16"	6-1/2"	45"	45"	13"
PHE130-80 / PHE199-80	80	72"	64-1/2"	5-1/2"	23"	34"	6-1/4"	19-1/2"	18"	8-1/2"	64-1/2"	64-1/2"	13"
PHE130-119 / PHE199-119	119	74"	66"	7-1/4"	27"	37"	7-1/2"	20-1/2"	19"	9-1/2"	66"	66"	14-1/2"

VERSA-HYDRO WATER HEATER SPECIFICATIONS

MODEL #*	GALLONS	INPUT MODULATION	AIR INTAKE/ EXHAUST VENT SIZE	WATER INLET/ OUTLET SIZE	AUXILIARY CONN.	GAS LINE CONN.	SYSTEM RELIEF PIPE SIZE	SHIPPING WEIGHT
PHE130-55 / PHE199-55	55	30,000 - 130,000	2"	1" NPT	1" FNPT	3/4"	3/4"	205 LBS.
		40,000 - 199,000	3"					
PHE130-80 / PHE199-80	80	30,000 - 130,000	2"	1" NPT	1" FNPT	3/4"	3/4"	265 LBS.
		40,000 - 199,000	3"					
PHE130-119 / PHE199-119	119	30,000 - 130,000	2"	1" NPT	1" FNPT	3/4"	3/4"	435 LBS.
		40,000 - 199,000	3"					

* A Suffix of "N" denotes natural gas and "LP" denotes propane gas
ALL DIMENSIONS ARE APPROXIMATE

LP-314-X
12/16/16