



---

## Water Storage Vessels Bare Tanks

---

- **Designed for storage of potable water up to 180° F (82° C).**
- **All tanks are constructed and certified** – in accordance with ASME IV, Part HLW for 125 PSI (862 kPa).
- **Glass lined steel tank** – Badgerland Tanks offers a premium lining that is applied to the interior surface of the steel providing a tough wear-resistant lining which minimizes the effects of high temperature hot water.
- **Magnesium anode rod** – for protection and longer service life.
- **###Aquastat NPT fitting** – Located in the lower part of the tank.
- **Manway** - Standard on all tanks over 36" diameter.
- **Lifting Lugs** – standard.
- **Red Oxide Primer** – Shop primer is standard on all tanks. Top coat and finish coats are available.
- **Five year limited warranty on steel tank** – provides warranty protection against tank failure resulting from defects in materials and workmanship.
- **Jacketed, insulated, and stainless steel water storage vessels are also available.**



# Water Storage Vessels - Bare Tanks

## Bare Storage Tanks

### Dimensions

Part No.	Nominal Gal. Cap.	Actual Gal. Cap.	Vert. Ht.	Horiz. Ht.	"L"	"D"	Base Clr. "E"	"H"	Dia.	Tapping "A"	Tapping "B"	Tapping "C"	Weight @125#
BS-30-063	193	175	67"	39"	63"	18"	4"	17.5"	30"	2.5"	1"	3"	303
BS-30-075	229	210	79"	39"	75"	24"	4"	17.5"	30"	2.5"	1"	3"	347
BS-30-085	260	240	89"	39"	85"	29"	4"	17.5"	30"	2.5"	1"	3"	383
BS-30-099	303	280	103"	39"	99"	36"	4"	17.5"	30"	2.5"	1"	3"	433
BS-30-111	340	320	115"	39"	111"	42"	4"	17.5"	30"	2.5"	1"	3"	476
BS-36-072	318	285	76"	45"	72"	21"	4"	19"	36"	2.5"	1"	3"	491
BS-36-078	344	310	82"	45"	78"	24"	4"	19"	36"	2.5"	1"	3"	527
BS-36-085	375	340	89"	45"	85"	27.5"	4"	19"	36"	2.5"	1"	3"	569
BS-36-090	397	360	94"	45"	90"	30"	4"	19"	36"	2.5"	1"	3"	599
BS-36-102	449	415	106"	45"	102"	36"	4"	19"	36"	2.5"	1"	3"	671
BS-36-114	502	465	118"	45"	114"	42"	4"	19"	36"	2.5"	1"	3"	743
BS-36-126	555	515	130"	45"	126"	48"	4"	19"	36"	2.5"	1"	3"	815
BS-42-081	486	435	85"	51"	81"	24"	4"	20.5"	42"	3"	1"	3"	695
BS-42-084	504	453	88"	51"	84"	25.4"	4"	20.5"	42"	3"	1"	3"	716
BS-42-093	558	505	97"	51"	93"	30"	4"	20.5"	42"	3"	1"	3"	779
BS-42-105	630	575	109"	51"	105"	36"	4"	20.5"	42"	3"	1"	3"	863
BS-42-117	702	645	121"	51"	117"	42"	4"	20.5"	42"	3"	1"	3"	947
BS-42-129	774	720	133"	51"	129"	48"	4"	20.5"	42"	3"	1"	3"	1,031
BS-42-139	846	790	143"	51"	139"	53"	4"	20.5"	42"	3"	1"	3"	1,101
BS-48-073	572	500	77"	57"	73"	18.5"	4"	22"	48"	3"	1"	3"	928
BS-48-084	658	580	88"	57"	84"	24"	4"	22"	48"	3"	1"	3"	1,045
BS-48-096	752	675	100"	57"	96"	30"	4"	22"	48"	3"	1"	3"	1,173
BS-48-108	846	765	112"	57"	108"	36"	4"	22"	48"	3"	1"	3"	1,301
BS-48-120	940	840	124"	57"	120"	42"	4"	22"	48"	3"	1"	3"	1,428
BS-48-141	1128	1040	145"	57"	141"	52.5"	4"	22"	48"	3"	1"	3"	1,652
BS-54-099	981	875	105"	63"	99"	37.5"	6"	25.5"	54"	3"	1.5"	3"	1596
BS-54-123	1219	1110	129"	63"	123"	49.5"	6"	25.5"	54"	3"	1.5"	3"	1889
BS-54-147	1457	1340	153"	63"	147"	61.5"	6"	25.5"	54"	3"	1.5"	3"	2182
BS-54-183	1814	1690	189"	63"	183"	79.5"	6"	25.5"	54"	3"	1.5"	3"	2622
BS-60-114	1395	1245	120"	69"	114"	45"	6"	27"	60"	3"	1.5"	3"	2299
BS-60-138	1689	1530	144"	69"	138"	57"	6"	27"	60"	3"	1.5"	3"	2704
BS-60-168	1983	1820	168"	69"	168"	69"	6"	27"	60"	3"	1.5"	3"	3110
BS-60-186	2276	2105	192"	69"	186"	81"	6"	27"	60"	3"	1.5"	3"	3516
BS-60-210	2570	2395	216"	69"	210"	93"	6"	27"	60"	3"	1.5"	3"	3922
BS-72-120	2115	1865	126"	81"	120"	48"	6"	30"	72"	3"	1.5"	3"	2876
BS-72-144	2538	2285	150"	81"	144"	60"	6"	30"	72"	3"	1.5"	3"	3363
BS-72-168	2961	2700	174"	81"	168"	72"	6"	30"	72"	3"	1.5"	3"	3851
BS-72-192	3384	3115	198"	81"	192"	84"	6"	30"	72"	3"	1.5"	3"	4338
BS-72-216	3807	3530	222"	81"	216"	94.5"	6"	30"	72"	3"	1.5"	3"	4825
BS-72-250	4406	4120	256"	81"	250"	113"	6"	30"	72"	3"	1.5"	3"	5516
BS-84-138	3310	2915	144"	93"	138"	57"	6"	33"	84"	3"	1.5"	3"	4647
BS-84-160	3886	3480	168"	93"	162"	69"	6"	33"	84"	3"	1.5"	3"	5328
BS-84-186	4462	4045	192"	93"	186"	81"	6"	33"	84"	3"	1.5"	3"	6009
BS-84-210	5038	4610	216"	93"	210"	93"	6"	33"	84"	3"	1.5"	3"	6689
BS-84-256	6141	5695	262"	93"	256"	116"	6"	33"	84"	3"	1.5"	3"	7994

Additional sizes available! Call for a quote.

### W-H-196 Test = 7.0 - 8.0 mg/in2

The W-H-196 Test is required for water heaters sold to the U.S. Government. The test consists of exposing the enamel to a boiling (212 F) 4/10% solution of Sodium Bicarbonate for eight (8), eighteen (18) hour cycles. Maximum weight loss after eight cycles is not to exceed 15 mg/in2.

### PEI T-21 Spot Acid Test = Class A

PEI T-21 Spot Acid Test is used to determine enamel resistance to acids. The test area is examined for visible effects on the enamel and is graded from Class AA (no sign of etching) to Class D (etched surface).

### Impact resistance = Class 4 to 5

The Impact Resistance Test is used to determine the adhesive qualities of enamel to the substrate. The enamel is graded from Class 1 (worst) to Class 5 (best), fractured glass adhering solidly to the impact area. Class 3 is acceptable.

### Hi-Pot Test Less than 20

The HYPO Test is a measurement of the continuity of the glass coating (Spark Test). Fifty (50) breakthroughs or fewer are the usual specification for HWT's.

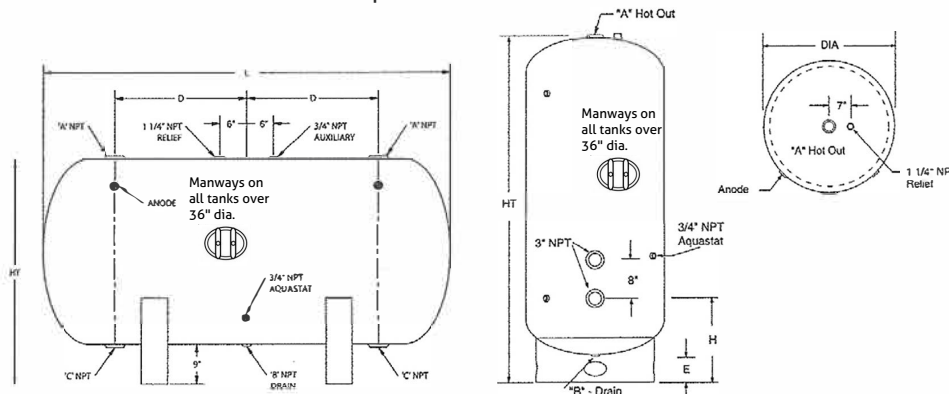
### Factory Options Include:

Epoxy Lining.....EX  
Double glass coating.....DG  
Manway.....MW  
Hand hole.....HH  
Saddles.....SD  
Stainless Steel construction....SS  
150 psi .....5  
Add suffix on model number to indicate options

\*Nominal gallon capacity is listed for comparison purposes. Nominal gallon capacity refers to a hypothetical measurement in a case where overall tank length remains the same but instead of an elliptical head and base, the gallons are calculated as if it was built with flat heads and base. - See diagram.



\*Nominal capacity includes the white area in addition to actual tank capacity.



Horizontal tanks are shipped with saddles attached to the tank.




For all your water storage needs

toll-free: 877-377-0011 fax: 877-280-0022

7500 N. 81st Street, Milwaukee, WI 53223

[www.BadgerlandTanks.com](http://www.BadgerlandTanks.com)

Badgerland Tanks is a division of  Hot Water Products, Inc.